

# Postill, Minick Trade Barbed Charges in Heated Debate

A capacity crowd of 127 persons filled the basement meeting room of Chelsea Lanes Tuesday evening, Oct. 5, to witness a stormy debate between Washtenaw County Democratic incumbent Sheriff Frederick J. Postill and his Republican challenger, Thomas Minick, sponsored by the Chelsea Jaycees.

The largely pro-minick audience listened while Postill opened the debate, claiming the role of sheriff has changed with urbanization, creating a demand for new approaches to law enforcement. The more traditional Minick responded it was time the sheriff's department went back to the basics of law enforcement.

Both Postill and Minick were unabashed in outlining their widely polarized programs to implement an effective and efficient sheriff's department. Both drew upon fact-

ual resources to defend their positions and traded barbs when the figures clashed.

Postill depicted Minick as unsuitable for police administration, charging "it takes more than being a simple police officer" to run the sheriff's department. Postill holds one master's degree and is working on a second.

Minick retalliated, accusing Postill of being unable to deal with his subordinates, alienating all other police forces in Washtenaw county, and behaving more as a salesman than a law enforcement officer.

Both agreed the three major problems facing the county are armed robbery, breaking and entering, and larceny, but offered contrasting solutions. Minick stated suppression of hard drug traffic was a priority in his strategy to reduce crime, and promised to work assertively in that area. Postill felt entrapment of drug dealers was a waste of public funds, that drug dealers were often involved in other illegal activities, and that arresting them on charges that would stick was a more efficient method of eliminating the problem.

Postill cited his record as proof of his ability to perform his job. Among the distillation of statistics he laid before the public, Postill stated he has more than tripled police cars on patrol, and has increased the number of officers in his department from 33 to 75. This was done at the lowest overall cost to taxpayers out of all county police departments, and with the aid of federal grants resulting from contracts for police protection which he initiated with townships, he revealed.

Postill compared his department's policing record to that of the Ann Arbor police, stating the sheriff's department closed 17 percent of its burglary cases while Ann Arbor police fell behind the county force with only 11 percent.

Postill's armed robbery arrest clearance figures outdistanced those of the city police by more than half, 76 percent to 37 percent.

Minick, who attempted to criticize Postill for exhibiting a lack of professionalism, accused the sheriff of condoning prisoner brutality. However, his reference to two incidents behind prison walls instead implicated Minick in a violation of the terms of prison confidentiality.

Postill's response to the incidents was to say the prisoner who had been denied medication had been found stashing away 50 pills for an apparent suicide attempt, while the inmate who had escaped three

times and robbed two nuns was put in chains and solitary confinement to discourage escape. "I do discourage escape, and I discourage prisoners from assaulting officers," Postill said.

On the matter of contracting for sheriff's department protection, Minick allowed he would make his department available for protection contracts. "We don't want to muscle in on local police departments," he stated, "let the people come to us." Police protection is more a moral issue than a political one he added.

Postill's reply was "all money is political," and that the government will not grant funds to police departments with a staff of less than 20. Contracting enables county law enforcement agencies to receive financial assistance from the government by operating under a larger law enforcement structure.

Postill also said advisory boards in the various contracting communities have been established to provide community input.

Minick, who outlined his plans to increase road patrols in the out-county areas, was criticized by Postill for decreasing protection in higher crime areas with the intended maneuver.

Judging from the audience reaction, Minick scored points when he charged Postill with an inability to deal with his subordinates. He pointed to the current warring between the sheriff and the department's Teamster Union employees, and denied Postill's past public accusations that the disharmony is a result of union politicking.

Postill responded by reiterating his charge that the Teamsters are trying to take over law enforcement in Washtenaw county. Postill charged the Teamsters are asking

for a 40 percent pay raise for Ann Arbor police in an attempt to win the department's loyalty and gain control of the department. Postill also tied the Teamsters to organized crime, saying Teamster Local 214 President Joe Valenti, the union's principal organizer of police agencies, was an alibi witness for Charles "Chucky" O'Brien, who has been connected with the disappearance of Teamster President James R. Hoffa.

Minick, who dismissed Postill's attempt to link organized crime to the Ann Arbor police department as a "fishing expedition" by the sheriff, admitted he did not even know what the Teamsters were asking at the bargaining table although he was a Teamster himself.

Minick pursued his attack on Postill's inability to deal with his subordinates, taking issue with Postill's reply to a statement asking why he was running for reelection. Postill had answered, "I feel in the next four years I will have eliminated a lot of the trash I inherited as personnel." Postill later substantiated the statement, saying he was referring only to a few people, and that most of his deputies are hard-working officers who made his department statistics what they are. "What a way to address subordinates—trash!" Minick commented.

As the debate ended, and the crowd began to file away, a random survey of the audience reaction ranged from "No comment, I'd vote for Minick any day," to another Chelsea resident's comment, "I'd say it was close and Postill really hurt himself with that statement about trash. However, if I were to score it, I'd say Postill won 51 to 49."

## WEATHER

	Min.	Max.	Precep.
Thursday, Sept. 30	44	67	0.00
Friday, Oct. 1	45	73	0.00
Saturday, Oct. 2	45	76	0.00
Sunday, Oct. 3	45	75	0.00
Monday, Oct. 4	52	77	0.00
Tuesday, Oct. 5	53	75	0.00
Wednesday, Oct. 6	51	80	0.78

ONE HUNDRED-SEVENTH YEAR—No. 17 14 Pages This Week Plus 4-Page Supplement CHELSEA, MICHIGAN, THURSDAY, OCTOBER 7, 1976 15c per copy SUBSCRIPTION: \$6.00 PER YEAR

# The Chelsea Standard

## QUOTE

"Preparedness preserves peace—weakness invites war."  
President Gerald R. Ford.

## Bulldog Grid Machine Stalls Against Novi

Following several pre-season scrimmages and a two-game season warm-up, the CHS Bulldogs were locked in the doghouse by Novi's varsity gridders in their league opener Friday, Oct. 1. The Wildcats packed it in 200 against the Chelsea challengers.

Chelsea's defense played a fine first half, according to Coach Phil Bareis, keeping the Wildcats at bay as they forced Novi to punt three times. The Bulldog's offense, unable to move with consistency, gave rise to the problems.

Quarterback Jeff Powell, subbing for injured Tony Houle, attempted to reduce the problems by playing a fine game. He completed three of 12 passes for 54 yards, and netted 33 yards rushing to lead the Chelsea offense.

Novi's first touchdown came in the second quarter on a 37-yard pass with only 34 seconds remaining in the first half. They returned to score on a 40-yard pass in the third quarter, and climaxed the scoring in the fourth quarter with a 45-yard touchdown run by Novi quarterback Randy Wroten.

The Bulldog defense was led by linebackers Tony Robards and Mark Smyth, and defensive guards James Bollinger and John Push. Defensive halfbacks John Adams and Mike Check made key plays for the Bulldogs.

Chelsea will challenge conference leader Brighton in their next game on Friday, Oct. 8. Heavy rivalry is anticipated as Chelsea will attempt to gain a foothold in the conference race by defeating the Brighton powerhouse.



EVA CARPENTER, in the foreground of the photo, is helped aboard Chelsea's new shuttle bus for senior citizens and handicapped adults by Sam Johnson, left, past president of the Chelsea Kiwanis Club, and Julius Blasser, center, current Kiwanis Club president. Driver Marvin Schiller, right, prepares to assume his place behind the wheel. Mrs. Carpenter, one of Chelsea's original proponents for the special shuttle, was honored by being first to ride the bus.

## Homecoming Week Fun Starts Monday

The CHS Senior Class will kick-off Homecoming Week Monday, Oct. 11, as they undertake a full day of activities under the banner of Teacher Appreciation Day.

The day will commence with a coffee and doughnuts session for teachers from 8 a.m. to 8:30 a.m. Students will then make themselves available for a variety of tasks, from cleaning blackboards to taking surprise quizzes. It will be the seniors' day to be pampered on Tuesday, when underclassmen will be required to perform favors for seniors during classroom time.

Special daytime events will continue as Homecoming Week progresses to Wednesday and Thursday. On those days, classes will compete in two singular dressing contests. Wednesday, students are asked to arrive at school dressed in the "craziest" outfits they can muster up. Thursday will witness a nostalgic return to the 50's as students attempt to recreate the "bobby socks and saddle shoes" image of that era.

On Friday, a show of school spirit is expected to peak, with students coming to class wearing school colors. A morning pep rally will preview the day. At the pep rally, each class will perform a skit with a homecoming theme. They will share the stage with the CHS cheerleaders who will lead off the events with group skits of their own.

The evening schedule of events welcomes spectator support from the community. Senior Class representatives stressed Monday evening, Homecoming Week will be initiated with a VW stuffing competition between freshmen, sophomores, juniors, and seniors, commencing at 6:30 p.m. on the CHS practice field. Immediately following the contest, preliminary Powder Puff games will get underway. The senior girls will line up against the freshmen girls, while the junior girls will face the sophomore girls.

Tuesday night will be devoted to a series of field day type activities, beginning with an obstacle course race between classes on the practice field at 7 p.m. Then, the Homecoming Queen candidates will be featured in a three-legged race on the track to be followed by a wheelbarrow race. A tug-of-war between classes over a huge mud puddle on the practice field, will climax the evening.

The Powder Puff finals are scheduled for Wednesday evening, highlighted by a car smashing contest at half-time. As the crescendo builds towards Homecoming Day on Friday, students will snake dance in the high school parking lot Thursday evening, generating an appetite for cider and doughnuts, and the ensuing pie-eating contest which will be held along with bobbing-for-apples to complete the Thursday night agenda.

On Friday night, Chelsea will have its day of reckoning, as the Bulldog gridders team up to face South Lyon in their Homecoming Game. During half-time the class winner of Pep Week will be announced and presented with the spirit prize. The evening will crest with the crowning of the 1976 CHS Homecoming Queen.

## Cross-Country Team Now 6-1 For Season

The CHS cross-country squad ran full strength against Dexter Thursday, Sept. 30, to pulverize the visiting harriers on their home course at Inverness, 17-42. Capitalizing on their momentum, Chelsea returned to a rugged Willow Run course on Tuesday, Oct. 5, to knock the wind out of both Willow Run and Dearborn Ribichaud, although handicapped by the loss of two leading runners who were temporarily out due to illness.

Dave Dawson recorded his personal best time against Dexter, taking first with a time of 16:40. On his heels were Rick Haller, second, 16:51; Phil Frame, third, 18:54; Dean Thompson, fifth, 17:30; and Morris Johnson, sixth, 17:35.

Chelsea's JV score against Dexter was 20-41, making it the Bulldogs' third consecutive win without a loss. Leading the way for the home team was Steve Kvarnberg, first, timed at 19:10. Close behind were Mike Beedenbender, 19:21; Brian Herrick, fourth, 19:37; Mark Shippy, sixth, 19:44; and Jim Fitzsimmons, seventh, 20:11.

Following their landslide victory over Dexter, Chelsea cross-country coach Pat Clarke remarked, "We're starting to come as a team. Our performance against Dexter was outstanding, particularly considering we didn't rest before the meet. We're now getting ready for our dual meet of the year against league champions Brighton, who have consistently won every major invitational they have entered."

Apparently part of Chelsea's preparation strategy included stretching ahead of Willow Run, 23-34, on Tuesday. In the meet, Rick Haller (Continued on page five)

## United Way Campaign Starts Oct. 18

A planning committee headed up by Pat Borders and represented by Marge Robbins, Anne Feeney, Dave McLaughlin, Gerry Dresselhouse, Art Sliot, Sharon Hodgson, and Kathy Frisinger have been meeting to plan the 1976-77 United Way Campaign. This year's campaign will run Oct. 18-29.

This year's area chairmen are as follows: residential, Charlene Balistrere; rural, Marian Klemmer; schools, William Chandler; commercial, Barbara Merkel; professional, Jeanne Riemenschneider; industrial, Gerald Ringe; organizations, Glenna Kargel.

This year's goal is \$32,065.

## Shuttle Bus Service Begins Next Monday

Beginning Friday, Oct. 8, a new Chelsea telephone number, 475-9494, will be in service, linking area senior citizens and handicapped adults to a village-wide and selective rural shuttle-bus service under the authority of the Chelsea Area Transportation System (CATS).

The first day of operation will be Monday, Oct. 11, with daily service hours, excluding Thursday, from 9 a.m. to 4:30 p.m. On Thursday the bus will operate from 9 a.m. to 1 p.m.

The bus, which arrived in Chelsea Tuesday, Sept. 28, will operate on a reserve call basis requiring a 12-hour advance notice. Afternoon transportation may be reserved the same morning, whereas morning transportation must be arranged by the afternoon of the preceding day. All rides will be on a first-call, first-serve basis, and riders are urged to book return trips at the same time starting trips are reserved. Calls will be taken daily during the week from 9 a.m. to 11 a.m., and from 1 p.m. to 3 p.m.

The CATS shuttle will transport residents 62 years of age or older, and handicapped persons 18 years of age or older throughout a 54 square mile service area. Operation within the village limits will be 4 1/2 days per week, while areas east of M-52 will be serviced Monday and Wednesday, and areas west of M-52 on Tuesday and Friday.

Areas mapped for service include almost all of Sylvan township and a large portion of Lima township. Boundaries are defined as north to the northern most boundary of Sylvan township, south to just beyond Scio Church Rd., east to Lima Center Rd., and west to Loveland Rd. In a recent flyer distributed throughout Chelsea by CATS, Lima Center Rd. was mistakenly identified as Baker Rd.

Bus fare has been set at 25 cents per passenger per trip, or a total of 50 cents for round trip service. However, service will be free for the balance of October.

The bus, a high-topped van specially equipped with a hydraulic lift to accommodate wheelchairs, has room for six seated passengers and two wheelchairs. Riders will be picked up at their front doors and taken anywhere in the service area.

CATS, which represents seven community organizations pledging financial support to the project, requested and received federal and state grants to subsidize the shuttle service. Sam Johnson, past president of the Chelsea Kiwanis Club, filed the grant request in 1974 on behalf of the Kiwanians and supporting organizations.

Instrumental in initiating the program was Chelsea resident, Eva Carpenter, one of the first proponents of a Chelsea transportation system for the elderly and handicapped. As a symbolic gesture of appreciation, she became one of the first residents in the area to ride the bus, shortly following the vehicle's arrival.

Presently groundwork is being laid for a connecting service to Ann Arbor. CATS is working on a proposal in conjunction with the Ann Arbor Transportation Authority to provide tie-up service beginning the first week in November. When the service is finalized, a public announcement will be made to that effect.

Chelsea's new shuttle bus will be on display Oct. 8-9, at the corner of Main St. and Middle St., for all residents who wish to view it.

## Girls Swim Team Shows Great Promise

The CHS girls swimming team opened their season against Class "A" power Jackson High School Thursday, Sept. 30, only to sink to defeat, 58-113.

Chelsea stroked ahead to two first-place and two second-place finishes against their experienced opponents, although their only prior competition had been in intrasquad meets. Chelsea swimmers consistently turned in personal best performances.

Leading the way for the Bulldogs were Shelly Springer with two firsts and a second; Patti Hume, two seconds and a third; Michelle Kamyssek, a second, third, and fourth; Karen Dresch, a second, third, and fourth; and Shannon Springer, two seconds and a fourth.

Other second-place finishers were Shella Tarasow, Kim Wood, and Jan O'Berg.

(Continued on page four)

## Assembly of God Church To Burn Their Mortgage

On Sunday, Oct. 10, the congregation of First Assembly of God church 14900 Old US-12, will hold a mortgage burning service beginning at 3 p.m. The public is invited to attend.

The Rev. Richard Cory, newly appointed pastor of the parish, will conduct the ceremony which will include special music by the Lighthouse Trio from Ohio. Speaker for the occasion will be Michigan District Assemblies of God superintendent, the Rev. Ivar Flick of Detroit.

Founded in 1934 over one of Chelsea's downtown buildings, groundbreaking for the present Assembly of God church took place in July, 1959. A year later the congregation moved in, with dedication ceremonies following in June 1962.

The Rev. Cory assumed leadership of the congregation in February, 1976. A four-year veteran of the ministry, he had served as assistant pastor at the Clinton Assembly of God church prior to his new appointment. The Rev. Cory is a 1974 graduate of Central Bible College, Detroit Campus.

## Jaycee Barbecue Scheduled Sunday

For 20 years, Chelsea Jaycees have had chicken on the menu for their annual fall barbecue, but so far no one has complained about the lack of variety.

Once again this Sunday, Oct. 10, Jaycee chefs Hank Ortrbring and Jim Gaken will serve up culinary masterpieces of barbecued chicken, dinner rolls, potato chips, and cold slaw, boxed for those who wish to proceed from the barbecue site to an afternoon of color-touring.

Jaycees will provide those interested in the autumn colors of the area with maps and poster routes of the Waterloo and Pinckney Recreation Areas.

A total of 1,500 chicken dinners will be available at a price of \$2.75 per dinner. Proceeds from the annual barbecue finance Jaycee community service projects.

## United Way Hears Needs of Agencies

Each spring the United Way of Chelsea spends two evenings listening to presentations by each of its 14 recipient agencies. At this time the individuals on the Budget Committee hear the group's dollar request and a capsule description of the function of each agency.

The Committee was unanimously impressed with the work of Catholic Social Services of Washtenaw county. Through some of its 250 volunteers they are available at least by phone 24 hours every day. They provide counseling for families and individuals under all kinds of stress. They provide concrete services, such as food and clothing, to 25 percent of its recipients. Some problems are economic, but others such as problem pregnancy, emergency housing, foster child placement also require immediate attention.

There is "a Special Foster Parent Program, unique in the state, consisting of foster homes which care for teen-agers whose life style and behavior are such that they do not fit into the available foster homes. Such adolescents require care and treatment in a setting where there is a greater acceptance, understanding and tolerance of the child's differences than is available in the average home."

"Because of the variety and number of the agency's foster homes," (Continued on page three)

## Historical Society Begins Fall Program

The Chelsea Area Historical Society will meet Oct. 11, 8 p.m., in the Congregational church meeting room to initiate its 1976-77 program of activities. Each member is asked to bring a photograph of his or her own home, or possibly a family home, which may be left with the Society.

The photographs will be catalogued and placed on file in the Historical Room at McKune Library for the benefit of posterity. Homeowners will be asked to provide information about the home at the meeting, including the name of its original owner, date of construction, present owner, and date of purchase. Newer homes should be included as these will also be considered older homes some day.

At a recent meeting, the program committee reviewed plans for the coming months. Members decided to concentrate their efforts towards determining which Chelsea structures might qualify as historic sites. Plans are under way to establish an Historical Sites Commission in Chelsea, and this information will be essential.

The committee attempted to obtain an outside speaker for the October meeting, but because Oct. 11 is officially Columbus Day, many establishments are not doing business. Therefore, the persons invited (Continued on page two)



Established 1871 The Chelsea Standard Telephone 475-1371

Excellence Award By Michigan Press Association  
1951-1952-1960-1964-1965-1966

Walter P. Leonard, Editor and Publisher

Published every Thursday morning at 300 North Main Street, Chelsea, Mich. 48118, and second class postage paid at Chelsea, Mich., under the Act of March 3, 1879.

Subscription Rates (Payable in Advance)

In Michigan:		Outside Michigan:	
One Year .....	\$6.00	One Year .....	\$8.50
Six Months .....	\$3.50	Six Months .....	\$4.50
Single Copies .....	\$ .20	Single Copies .....	\$ .25

MEMBER  
**NATIONAL NEWSPAPER**  
Association - Founded 1885

National Advertising Representative:  
MICHIGAN NEWSPAPERS, INC.  
257 Michigan Ave.  
East Lansing, Mich. 48823

## Uncle Lew from Lima Says:

DEAR MISTER EDITOR:

The fellers started out on the weather at the country store Saturday night, and they worked their way around to prayer. It turned out they was in water over their heads with both topics, so it was a good thing they let politics rest or they would of gone home even worse confused.

Zeke Grubb had this report where scientists say the long dry spells in much of the world this summer may be part of a major shift in world weather. The cold areas are warming, deserts are gitting rain and new deserts are popping up, like in England. One professor figgers if all the ice up north melts, the oceans will rise and all of Florida and a big slice of all our coast will be under water in 75 years. A feller could buy up land in the right places now, wait 75 years and make a killing selling ocean front lots, was Zeke's idee.

Most parts of this country have been extra dry this year, Zeke went on, but Europe is having the worst drought in 250 years. We need water fer life, Zeke said, and fer treating sewage. He had saw where towns with low water supplies was using more flavoring than ever before. They stir the peach and apple blossom smells in with the treated sewage to keep folks happy, cause the lower the water the more the stink. Zeke said this move is as practical as painting a rotten ladder so folks won't mind climbing it, he could see the problems, city folks have with equif water.

There's still life in England, reported Zeke, even though they ain't much water. And, probably, he said, folks have to keep a stiff upper lip on account of the sewage. Of all Europe, this report said, England was faring the worst in the drought.

The fellers had been doing some reading on England's thirst, and it was Clem Webster that told where the English people had ask their Archbishop of Canterbury to pray for rain. Clem said the Archbishop wouldn't do it, allowing that in the first place it wouldn't do any good, and in the second place if his prayers worked it would just mean more work fer him.

From what he could make of it, Clem went on, the Archbishop

said if he prayed and it rained, folks would come right back and want him to pray for somepon else. What this would lead to, the church leader allowed, was the people expecting prayer to solve ever problem that come along. That would be bad fer their character, he said, cause they would depend on his prayers instead of themselves.

The fellers fell into a general discussion on prayer. Ed Doolittle said that to his mind they is a heap of difference in praying fer a free throw in a game and gitting down to serious problems, but Ed said it was our business to pray, in any case, and the Lord's to decide what to do about it. Bug Hookum said the Archbishop just didn't want to be put on the spot and run the risk of the Lord saying no.

Yours truly,  
Uncle Lew.

## School State Aid Payments Being Distributed Soon

Four local school districts are scheduled to receive their Oct. 1 state aid payments shortly, Michigan congressional representative Mike Conlin (R-23rd) reported Wednesday, Sept. 29.

Six payments are made annually to districts for state aid, Title I, Title III, and vocational education. Amounts to be distributed in the local area are Chelsea School District, \$89,270 in state aid and \$3,554 in Title I funds; Dexter Community School District, \$60,280 in state aid; Manchester Public School District, \$87,140 in state aid; and Saline Area School District, \$143,730 in state aid.

## Historical Society

(Continued from page one)

ed to speak were on holiday, and unwilling to make the trip. With the exception of October, speakers scheduled for ensuing monthly meetings are: Nov. 8, Professor Kingsbury Marzolf, Ann Arbor, on Identifying Domestic Architecture; Dec. 13, Sam Breck, Ann Arbor, on "Trains, Trolleys, and Depots"; Jan. 10, Lydia Muncie presenting an Oral History; Feb. 14, Wiston Stevens, Kempf House, Ann Arbor, with a slide presentation of significant Ann Arbor structures.

The society, which is looking forward to an interesting series of meetings, wishes to extend an invitation to all Chelsea area persons, members or not, to attend the monthly meetings.

Subscribe today to The Standard!

## MICHIGAN MIRROR

By Warren M. Hoyt, Secretary, Michigan Press Association

### Securities Violations

"White collar crime seems to be a booming business."

Hugh Makens, director of Michigan's Corporation and Securities Bureau, says there were more than \$15 million in identified losses through securities violations alone in Michigan last year.

"And my best estimate is that actual figures ran between two and three times that amount."

And don't just say, "Ho-hum how does that affect me?" Read on.

It's not just oil wells and bank investments and high finance that come under the scrutiny of Makens' bureau.

Investors with purses of all sizes run the risk of losing. "When measured in terms of the impact upon individuals this (last year's) loss was staggering," Makens says.

"It represented retirement funds, new homes, money for food and clothing and an overwhelming pile of crushed dreams and visions."

Take the Glenn Turner "Dare to Be Great" cosmetic pyramid scheme as an example.

Makens points out that Michigan losses from Turner Enterprises are estimated at about \$2 million. And Turner's cadre of workers "preyed principally on the lower income level blue collar worker or the very young just entering the job market," Makens says.

Many lost all they had and some they didn't—the money they'd borrowed from their banks to become involved. (And, Makens says, Turner's people even helped "victims" fill out loan applications to indicate they wanted money—not for his scheme—but for home improvement loans or some such.)

Michigan's Corporation and Securities Bureau tries to protect all investors — no matter the size of their bankrolls.

"The goal is to eliminate the non 'business' risk from the investment," Makens says of his Bureau's task. "In essence, our

observation is that the chance of the public getting ripped-off in conjunction with a sale of a security cleared through the bureau is pretty slim."

### Hike the Age?

What a difference four years make!

Back in 1972, the Michigan Council on Alcohol Problems surveyed candidates for the House of Representatives, asking about the state's drinking age. That year, 65 percent of those candidates responding said they were satisfied with the drinking age at 18.

This year, early results from the Council's poll show 83 percent of the respondents want the drinking age hiked up to 19 or back up to 21.

Public airing of statistics like the following may have something to do with the change. MICAP reports these compiled figures:

—In 1971, the last year Michigan had 21 as the legal drinking age, there were 87 fatal accidents involving drinking drivers age 18-20. Four years later, there were 164 such accidents.

—Drinking drivers age 18-20 were involved in 1,787 personal injury accidents in 1971-4,481 in 1975.

—Property damage accidents involving drinking drivers in the 18-20 age group zoomed even more from 1,916 in 1971 to 6,056 in 1975.

Argue that the lower drinking age had nothing to do with those increases and you may be right.

But an expert connected with the University of Michigan's Highway Safety Research Institute, Dr. Richard Douglas, concluded in his doctoral dissertation that there were more 18-20-year-olds driving after drinking and getting involved in accidents. And, he says, this happened because of the lower drinking age.

Street Solution  
Are we really solving the prob-

## Scholarship Qualifying Tests Slated Tuesday

High school juniors with good academic abilities and an interest in pursuing higher education goals are encouraged to register for the Preliminary Scholastic Aptitude Test (PSAT) and National Merit Scholarship Qualifying Test (NMQST) which will be administered Tuesday morning, Oct. 19 in the high school cafeteria, the CHS Counseling Department has reported.

Enrollment for the exams will be conducted in the high school office Oct. 11-15. Cost of the test is \$2.75. Upon registration, students will receive a booklet containing sample questions, scholarship information, and other pertinent data relating to the tests.

The PSAT has been developed to measure verbal abilities and mathematical aptitude, based on a national average. Determination of a student's verbal abilities is made by testing their facility in dealing with antonyms, analogies, sentence completion, and reading comprehension. Mathematically, the exam will focus on elementary algebra and geometry.

Both the PSAT and NMQST are designed to prepare students for future college admittance tests.

lem of street crime by looking up those found guilty far away from their communities, while their communities slowly die from inadequate services?

Atty. Gen. Frank Kelley asked the question recently before the Michigan Association of Prosecuting Attorneys. And he came up with this answer:

Put juvenile offenders to work—cleaning up alleys, sweeping gutters, picking up debris from empty lots.

That way, Kelley said, society would get some help from those who've harmed it, and young people would learn first hand that "violating the law is not nearly as romantic as they may have thought it was."

such as the SAT and ACT. High NMQST scores are a prerequisite for National Merit Scholarship candidacy. Any questions parents or students may have regarding the exams should be directed to the Counseling Department, 475-9131.

## DAVIDSON STATION

Coney Island  
and a Mug O' Beer

113 S. MAIN CHELSEA

## CHELSEA JAYCEES

ANNUAL

# CHICKEN BAR-B-Q

SUNDAY, OCTOBER 10

Serving 11 p.m. till?

Corner of Old US-12 and M-52  
Chelsea

\$2.75 per dinner

Includes 1/2 chicken, roll, butter,  
cole slaw and chips.

CHELSEA JAYCEES  
DALE MESSING, CHAIRMAN

## JUST REMINISCING

Items Taken from the files of The Chelsea Standard

### 4 Years Ago...

Thursday, Oct. 12, 1972—

Fritz Wagner, son of Mr. and Mrs. Frederick J. Wagner of Congdon St., has recently passed his PhD general examinations in the Department of Urban Planning at the University of Washington, Seattle. This qualifies him as a doctoral candidate.

The Chelsea High School Marching Band was applauded for its performance at Western Michigan University's Band Day, Sept. 30, receiving letters of citation from Carl Doubleday, assistant chairman of concerts and special events, and Robert Fink, Department of Music chairman at Western.

Township growth and the Mill Creek Park issue will be the topics under consideration at the Lima Township Planning Commission meeting Oct. 17. Johnson, Johnson & Roy, a planning consultant firm, will present their guidelines for township development.

Super-chef Joe Doering orchestrated the cooking of 2,500 chickens with the aid of his cohorts Jim Gaken and Hank Orbring at the annual Jaycee Chicken Barbecue held Oct. 8.

Homecoming Queen candidates for 1972 are Nancy King and Connie Salver, senior class representatives; Robin Terns and Lynn Roskowski, junior class representatives; Sue Hatner and Valerie Robertson, sophomore class representatives; and Cindy Giffen and Teri MacDonald, freshman class representatives.

Super-chef Joe Doering orchestrated the cooking of 2,500 chickens with the aid of his cohorts Jim Gaken and Hank Orbring at the annual Jaycee Chicken Barbecue held Oct. 8.

Homecoming Queen candidates for 1972 are Nancy King and Connie Salver, senior class representatives; Robin Terns and Lynn Roskowski, junior class representatives; Sue Hatner and Valerie Robertson, sophomore class representatives; and Cindy Giffen and Teri MacDonald, freshman class representatives.

### 14 Years Ago...

Thursday, Oct. 11, 1962—

George A. Staffan is now a full-fledged fourth generation member of the firm of Staffan Funeral Home; he has been licensed by the Michigan State Board of Mortuary Science after completing the required year of apprenticeship.

Jack Musser, Chelsea High school industrial arts teacher for the past 10 years, has tendered his resignation, accept a position as business manager of the Grand Haven public schools.

Village President Robert Daniels proclaimed Oct. 15-Nov. 5 "Community Chest Weeks." The drive will attempt to reach a goal of \$15,400 this year.

### 24 Years Ago...

Thursday, Oct. 9, 1952—

Sally Vogel was chosen queen of the 1952 Community Fair during Saturday night's program. Members of her court were Shirley Rihlmaki, Mary Bauer, Yvonne Hoffman, Sharon Dancer and Nancy LaPrel.

Stanley Knickerbocker, Chelsea sophomore at the University of Michigan, played with the Michigan team in the televised Stanford-Michigan football game which Michigan lost by a score of 14-7 at Palo Alto, Calif., last Saturday.

The Chelsea Village Council, at its meeting Monday evening, approved the opening of Keeser subdivision as presented in an engineer's plan submitted by Dale Keeser.

Mr. and Mrs. James Ewald were married at the Chelsea Community Fair by Justice of the Peace William C. Pritchard before 200 invited guests and hundreds of Fair visitors. Merchants of Chelsea contributed many valuable gifts to the couple.

### 34 Years Ago...

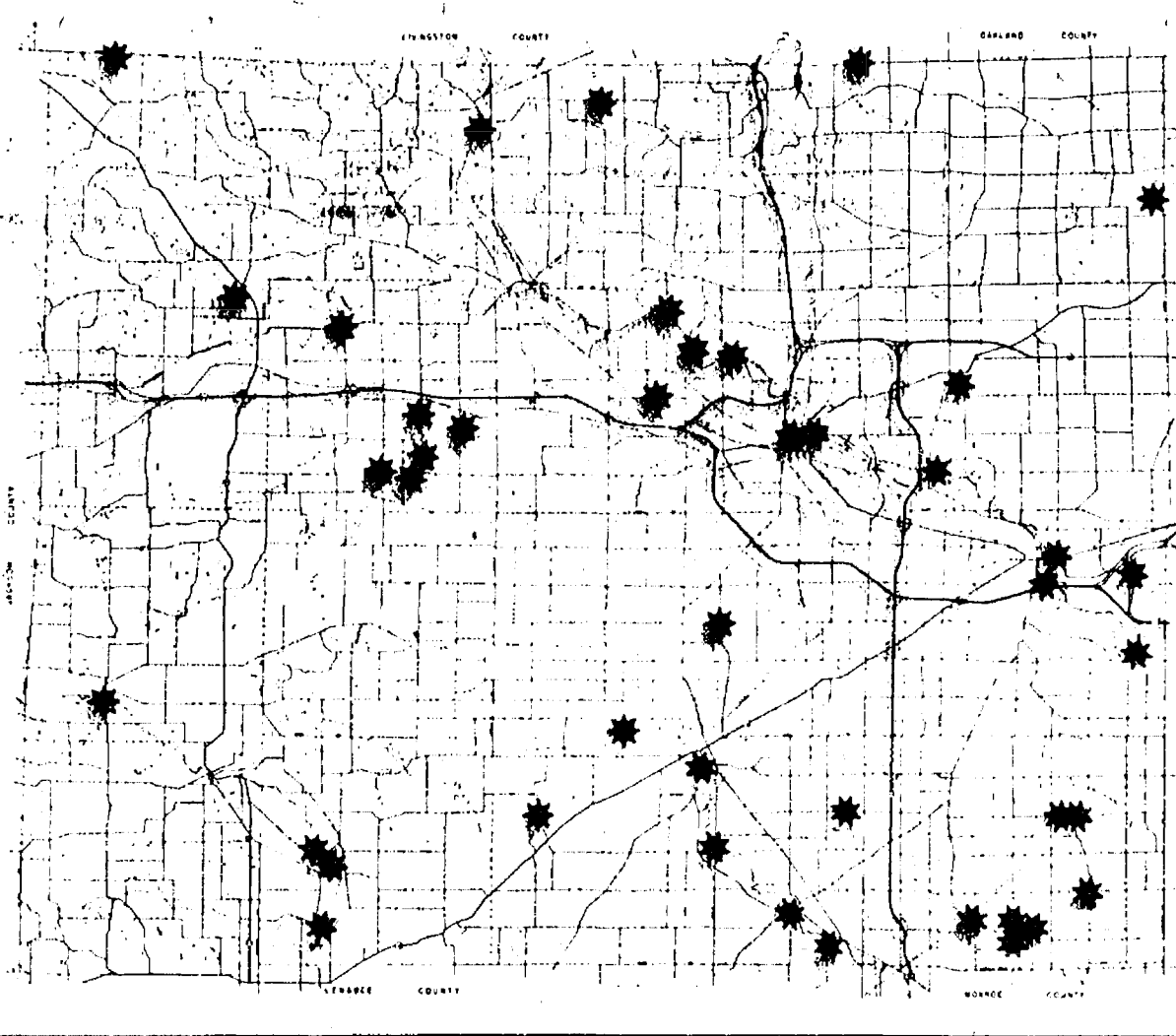
Thursday, Oct. 8, 1942—

The half-million small game and deer hunters invading Michigan's woods and fields this fall are asked by the department of conservation to cooperate with the Michigan Salvage Committee by saving all their shotgun and rifle casings.

Fred C. Klingler, who has been keeping his license plates as souvenirs tacked up in his garage at 217 Harrison St., has the longest unbroken string so far reported in the county.

### PROPOSITION 1

## A County-Wide Concern....A County-Wide Solution



### 42 Critical-Bridges\*

Bridges are the crucial link in our primary and secondary road system. This November voters in the county will make a decision whether or not to improve the Critical-Bridges at the starred locations on the map.

### Why A Millage

A one-half mill levy for five years is being proposed because of:

- Bridge Conditions:**  
The physical condition of the 42 Critical-Bridges identified on the map does not meet today's standards.
- Declining Available Revenue:**  
No money presently comes to the Road Commission from property taxes or the county General Fund. The major source of revenue, The Michigan Motor Vehicle Highway Fund, is insufficient to finance both road construction, road maintenance, and a Critical-Bridge improvement program.
- Federal Matching Funds:**  
Federal allocations are available for bridge improvements but local dollars must be provided.

This information has been provided by the Washtenaw County Road Commission in the public interest.

## Howell Livestock Auction

Starts 1 p.m. Every Monday  
Mason 676-5400

The Wise Owl Says Ship to Howell  
Phone 546-2470. Bim Franklin

### Market Report for Oct. 4

### CATTLE—

Bulk Ch-Choice Steers, \$35 to \$37  
Few High Choice Steers, \$37 to \$37.50  
Ch-Choice Heifers, \$33 to \$36  
Fed Holstein Steers, \$30 to \$32.50  
UL-Std., \$29 and down.

### COWS—

Heifer Cows, \$25 to \$27  
UL-Commercial, \$22 to \$25  
Canner-Cullers, \$15 to \$22  
Fat Beef Cows, \$20 to \$22

### BULLS—

Heavy Bologna, \$30 to \$33  
Light & Common, \$29 and down.

### FEEDERS—

400-600 lb. Good-Choice Steers, \$34 to \$38  
600-800 lb. Good-Choice Steers, \$28 to \$34  
300-600 lb. Good-Choice Heifers, \$27 to \$32

### CALVES—

Prime, \$50 to \$60  
Good-Choice, \$36 to \$50  
Heavy Heifers, \$25 to \$40  
Cull & Meat, \$10 to \$25  
Calves going back to farms sold up to \$45

### SHEEP—

Shorn Slaughter Lambs:  
Choice-Prime, \$38 to \$41  
Good-Utility, \$35 to \$38

### WOOLLED Slaughter Lambs, Spring:

Choice-Prime, \$38 to \$41  
Good-Utility, \$35 to \$38  
Slaughter Ewes, \$35 to \$43  
Feeder Lambs, All Weights, \$40 to \$44

### HOGS—

210 to 240 lbs., No. 1, \$35 to \$35.60  
200-250 lbs., No. 2, \$34 to \$35  
Heavy Hogs, 250 lbs. up, \$30 to \$34  
Light Hogs, 200 lbs., \$25 to \$32

### Pigs:

Fancy Light, \$29 to \$30  
300-500 lb., \$28 to \$30.25  
600 lbs. and up, \$28 to \$30

### Pigs and Steers:

All Weights, \$21 to \$28  
Feeder Pigs:  
Fryer, \$10 to \$35  
Fryer, \$10 to \$35  
Fryer, \$10 to \$35

### WAG—

Culling, per bale, 50c to \$1  
\$1.00 Culling, per bale, \$1 to \$1.40

### STRAW—

1/2 Bale, 50c to 65c

### COWS—

Small Dairy Cows, \$300 to \$550  
Faded Beef Type Cows, \$250 to \$350

## ATTENTION AUTOMOBILE MECHANICS

Refresher Classes for Certification Tests

of the

National Institute for Automotive Service Excellence

Offered by the Staff of the  
AUTOMOTIVE SERVICE CENTER  
of  
Washtenaw Community College

Test Review Group	NIASE Test No.	Test	Refresher Class Dates	Cost
A	4	Front Ends	Part I Saturday, Oct. 16	9:00-12:00 Noon .....\$15.00
		Part II Saturday, Oct. 16	1:00-4:00 p.m.	
B	5	Brakes	Monday, Oct. 18	7:00-10:00 p.m.
C	2	Automatic Transmissions	Part I Saturday, Oct. 23	9:00-12:00 Noon .....\$15.00
		Part II Saturday, Oct. 23	1:00-4:00 p.m.	
D	3	Manual Transmissions and Rear Axles	Monday, Oct. 25	7:00-10:00 p.m.
E	6	Electrical Sys.	Part I Saturday, Oct. 30	9:00-12:00 Noon .....\$15.00
		Part II Saturday, Oct. 30	1:00-4:00 p.m.	
F	7	Heating and Air Conditioning	Monday, Nov. 1	7:00-10:00 p.m.
G	8	Engine Tune-Up	Part I Saturday, Nov. 6	9:00-12:00 Noon .....\$15.00
		Part II Saturday, Nov. 6	1:00-4:00 p.m.	
H	1	Engine Repair	Monday, Nov. 8	7:00-10:00 p.m.

In order to take the certification tests, you must have your application to NIASE by October 12, 1976. Applications are available at the Automotive Service Center.

MEETING PLACE: Automotive Service Center

5115 Carpenter Road, Ypsilanti, Michigan

REGISTRATION: Students must be pre-registered to attend classes. To pre-register, phone 434-1555 and reserve a place in the test review group or groups which you desire.

## Make Some Little Girl Happy

### Enter Our Annual Dress-A-Doll Contest

Dress-A-Doll makes you a part of warmer Christmases for little girls who desperately need cheer and love. You show you care when you enter our Dress-A-Doll Contest.

We provide the 16" doll, and you design and sew an outfit for it. There are six costume categories with six \$20 First Place Prizes, six \$10 Second Place Prizes, six \$5 Honorable Mention Prizes and a Grand Prize of \$50. Costumes will be judged and displayed in our lobbies in December. At Christmas time each doll becomes a gift to some needy child in the community. And you made it happen. Pick up your dark or white doll and rules at any AAFS office starting October 4. It must be returned by November 12.

Won't you warm a little girl's heart this Christmas? Yours will be warmer, too.



Shown above is the 1975 Grand Prize winner designed and sewn by Delores Bunney.

## ANN ARBOR AAFS FEDERAL SAVINGS

ANN ARBOR OFFICES: Downtown, Liberty at Division; Westside, Pauline at Stadium; Eastside, Huron Parkway at Platt; Northside, Plymouth at Nixon; Southside, Briarwood Circle; BRIGHTON 205 West Grand River; CHELSEA Main Street near Old U. S. 12; DEXTER 8081 Main Street; MANCHESTER 111 East Main Street; SALINE 101 West Michigan; YPSILANTI-Hewitt at Packard

Member: Federal Home Loan Bank System • Federal Savings and Loan Insurance Corporation



# "What's cooking in Michigan..."

by Carl B. Olson  
Michigan Department of Agriculture

With crisp weather signalling the beginning of fall, what better time to go to your local city or farmer's market to enjoy the rich and bright colors of Michigan's harvest season.

This trip to the market is a treat my wife and I reserve for Saturday mornings but most markets are open several other days during the week. They range in size from the huge Eastern market in Detroit to open tailgates in pickup trucks in parking lots. It all is fun.

If you haven't tried it yet, do. You should be cautioned, however, that many people find it habit forming.

A part of the "neatness" of the trip to a farmer's market is the opportunity to see a real farmer, the same person who grows the food behind the counter. It also offers a chance to ask questions about how the product got to the market and I have yet to be refused a reply.

Why not look especially for Michigan produce and make a "event" from your collection?

tion? It's an excellent time for fresh lettuce from the fields as well as tomatoes and, in my mind, that stands for salad. Additions? How about slicing a few onions in, adding to the flavor. Cucumbers, a few carrots, and sliced celery and you've got all the basics. Pour on the dressing and toss.

My biggest problem has always been buying too much. It's just too tempting to see all that fresh produce and not buy "a couple of heads of this and a bag of that and a pound of what's over there."

When we first started our Saturday morning forages into our local market, we ended up with our arms full of small bags of fruits and vegetables. We don't do that any more. No, we don't buy less. We just start with a large shopping bag from home because we know we're going to buy more than we really need.

Try it, you'll like it. In fact, maybe I'll see you there.

## D. Klemer Named to U-M Dean's List

David P. Klemer, son of Mr. and Mrs. Earl M. Klemer, 13483 Trinkle Rd., was named to the Dean's Honor List for the 1976 spring-summer term at the University of Michigan, administration officials announced Thursday, Sept. 30.

Klemer is an undergraduate student in the College of Engineering.

Telephone Your Club News To 475-1371.

## Wackenhut-Pfaus Vows Spoken Friday at Zion Lutheran Church

Sharon Ruth Wackenhut, daughter of Mr. and Mrs. Lorenz F. Wackenhut of Chelsea, exchanged marriage vows with William Edward Pfaus, son of Mrs. Clarence Pfaus of Manchester, Friday evening, Sept. 24, in Zion Lutheran Church. The ceremony was conducted by the Rev. John R. Morris.

During the wedding service, Mrs. James Jones, organist, accompanied Mrs. Jody Maule, who sang "Follow, Me" and "The Lord's Prayer."

The bride approached the altar wearing a white satin gown with a "V-neckline, chiffon sleeves, and a full skirt with a chiffon overlay. The bodice and sleeves were trimmed with lace and pearls. The cap of her fingertip veil was accented with lace and pearls to match the gown, and she carried a bouquet of baby blue carnations, stephanotis, and baby's breath.

Susan Osestoski of Chelsea was maid of honor for the occasion, while Mrs. Christopher Lentz of Manchester, and Sandy Waters of Ridgeway attended as bridesmaids. They were all dressed in identical blue gowns of crinkle texture, with lace trim along the bodice and skirt. Miss Osestoski wore a matching blue bonnet with white lace and carried a blue hurricane candle. The attendants were attired in white bonnets and carried white hurricane candles.

Robert Roehm of Ann Arbor was best man. He was assisted by ushers Gary Stoll and Christopher Lentz, both of Manchester.

Flower girls were Kim Wackenhut, the bride's niece, and Dawn Weatherax, her cousin. They wore matching blue and white dresses, and held baskets of blue and white carnations and baby's breath.

For her daughter's wedding, Mrs. Wackenhut appeared in a brown and cream-colored playestergown with a sheer, gold, brown, and white print over jacket gathered at the waist in a peplum.

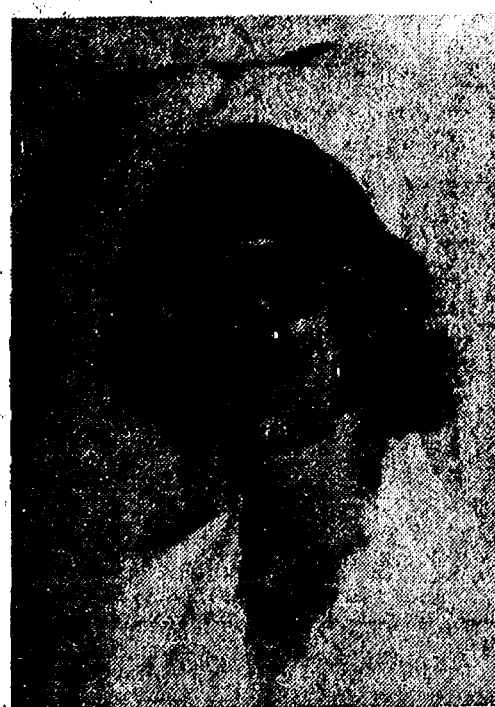
Mrs. Pfaus was dressed in a soft, mint green playestergown with a matching jacket.

Immediately following the ceremony, a reception was held at the Farm Council Grounds, Saline. Mary Ann Detling and Paula Detling cut and served the wedding cake, as Mrs. Debbie Ganzhorn and Vicki Lara poured punch and coffee. Gail Wackenhut, sister of the bride, was in charge of the guest book. Musical entertainment for the occasion was provided by The Roamers.

Upon their return from a honeymoon to northern Michigan, the newlyweds will reside on Bethel Church Rd., Manchester.

The former Miss Wackenhut is a 1975 graduate of Chelsea High school, and is employed by Eastern Michigan University.

Mr. Pfaus is a 1972 graduate of Manchester High school, working for Double A Products and A & G Weldmayer Farms in Manchester.



Mrs. William Pfaus

## Fall Bazaar Slated Oct. 30 at Methodist Home

On Oct. 30 the Chelsea United Methodist Retirement Home will conduct their annual fall bazaar in the recreation room of the apartment building. There will be articles of various kinds, aprons, crocheted work and knitting, afghans and infants' jackets and booties, also beautiful ceramic and special novelties.

Along with all of the handwork articles there will be a sale of home-baked goods and a refreshment counter.

This will be a special opportunity to purchase some lovely Christmas gifts.

Everybody is invited to attend.

## Aquatic Club Swimming Meet Slated Saturday

The newly-formed Chelsea Aquatic Club will hold a city swimming meet Saturday, Oct. 16, 3:30 p.m. at the Beach school pool. Participation is limited to the club's 150 members.

However, membership is still open to anyone interested in competing. Potential participants are asked to contact Mr. Reed at the Beach Pool.

All competitors in the city swimming meet will receive awards.

## Motor News Story Lists Chelsea Fall Color Outstanding

Chelsea's brilliant display of fall colors is cited as a major tourist attraction in Automobile Club's Michigan's October Motor News magazine.

"Although there are many places in Michigan to enjoy fall scenery, the Chelsea area is outstanding," Auto Club's 1.2 million reader-members are told in an article entitled "Where the Color Is."

Motor News suggested that a Chelsea area fall color tour also include Ann Arbor, Dexter, Stockbridge and Plymouth.

## Truck Flips, Spills Load of Pigs In Dense Fog

A truck load of 185 pigs, on their way to market, had an unexpected taste of freedom early Sunday morning, Oct. 3.

According to the Washtenaw County Sheriff's Department, Danville, Ind., driver, Allen Black, 22, was hauling a trailer load of hogs on eastbound I-94 east of Fletcher Rd. when the vehicle ran out of control in the dense fog.

The trailer bounced onto the shoulder and as Black struggled to return it to the roadway, the entire rig flipped onto its side, spilling loose pigs from the wreckage.

Police arrived to find Black had escaped serious injury, and proceeded to recapture his squealing load.

With the return of the school year parents of school-aged children should see to it that their youngsters have their hearing ability tested, hearing specialists say. All too often a child who appears inattentive, pre-occupied, disobedient, withdrawn and even stupid, is suffering from an undetected hearing loss, they add.

## School Questions To Be Discussed at North Lake Area Home

Attention all North Lake area residents:

We are faced with an important school election. Do you feel the need to know more facts about your schools? Are you really informed on all the issues that face you in your schools? Do you know the members of your school board?

If you cannot answer all these questions, then please come to a coffee at the home of Bob and Alice Thornton, 14215 Riker Rd., on Tuesday evening, Oct. 12, from 8 to 9 p.m. Drop in, meet some of your school board, show your concern and receive answers to your questions!

## Stolen Pick-Up Truck Recovered By Police

Chelsea police recovered a 1974 Ford pick-up, owned by Albert Brown of Brown Dr. on Monday, Sept. 27 after a resident informed police the unidentified vehicle was parked in his field, east of Con-way Rd., and just north of Bush Rd.

The truck had been reported stolen Sept. 25. No suspects have been named in the case, and an investigation is still underway.

5.6 million 4-H members will be challenged to broaden their interests and concern for others during National 4-H Week, Oct. 3-9.

## Magic Mirror Beauty Salon

Open Tuesday thru Friday  
9 a.m. to 9 p.m.  
Saturday, 8 a.m. to 3 p.m.

PHONE 665-0816

Out of town or on the town

You can't escape the line!

You're no longer thirty-nine!

Happy Birthday, Janette

The Chelsea Standard, Thursday, October 7, 1976 3

## United Way Board Hears Agencies...

(Continued from page one)  
other community agencies are constantly requesting Catholic Social Services homes for their own children or are referring children to C.S.S. for placement. This has resulted in close relationships between C.S.S. and such agencies as the Dept. of Social Services, Juvenile Court, and the Police, Child and Family Service as well as the adolescent unit of the U-M Neuropsychiatric Center and the Ypsilanti State Hospital.

The Committee will be more than pleased when it is able to turn over to this worthwhile organization its requested funds upon completion of the 1976 campaign running from Oct. 18-31.

Sell it with A Standard Want Ad!

## CARPET REBIRTH

Give your carpet a new lease on life  
by cleaning it regularly.

## JET SPRAY CARPET CLEANING

Use Your BankAmericard Phone 761-3025 or 475-1509  
Ask for John Lixey.

## PLAN TO ATTEND Dexter's Annual HOUSE TOUR FRIDAY, OCT. 15

5 area homes and the Dexter Museum will be open.

Luncheon will be served at St. Andrew's Church

Tickets available at

In Dexter  
McLead's Pharmacy  
Ann Arbor Federal Savings & Loan  
Dexter Library  
Merkel's Furniture, Chelsea  
Happy House, Westgate Center  
Vera's Wallpaper, Carpenter Rd.

On Oct. 15 Tickets available at Dexter Library, Ann Arbor Federal Savings, St. Andrew's Church.

\$2.50 House Tour - \$2.50 Luncheon

Sponsored by Friends of the Library and Dexter Area Historical Society.

## LYNN'S BEAUTY SHOP

1196 CHELSEA-MANCHESTER RD.

(across from Village Motor Sales)

475-1591

★ Complete Hair Care

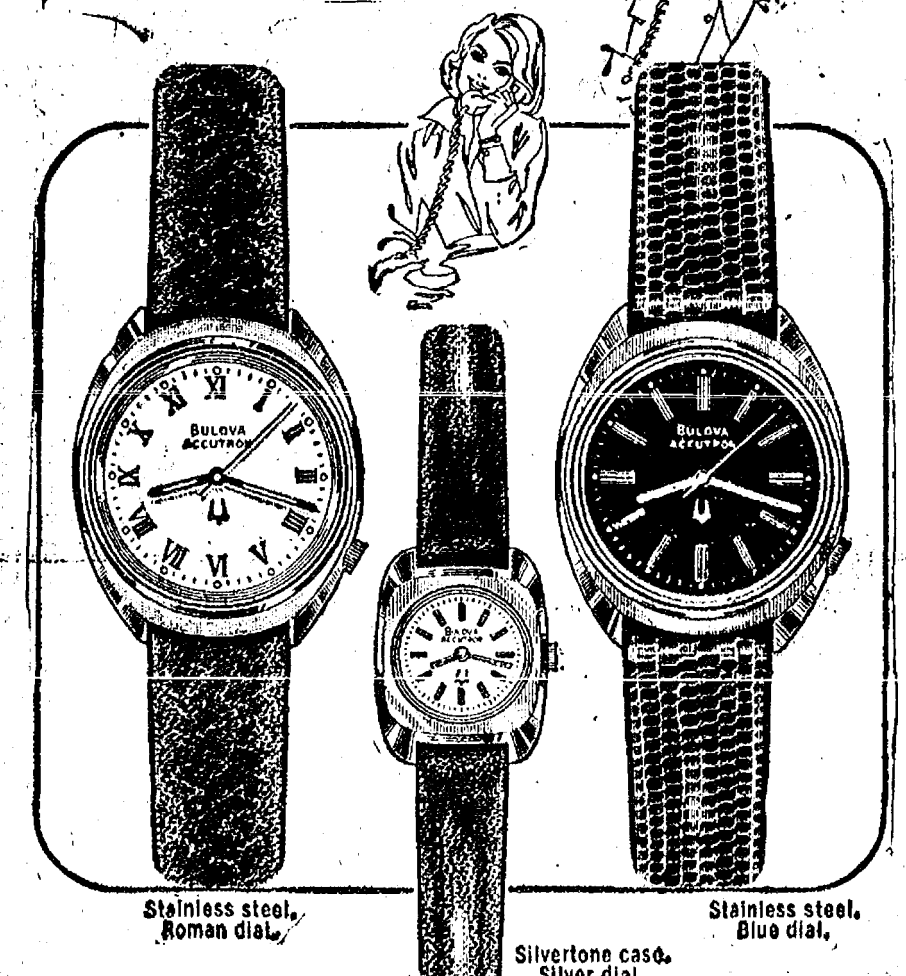
★ Air Conditioned

★ Free Parking

HOURS:

Monday thru Wednesday 9 a.m.-2 p.m.  
Thursday 9 a.m.-7:30 p.m.  
Friday 9 a.m.-5 p.m.  
Saturday 9 a.m.-12 noon

## Bulova Accutron



Time-tested electronic accuracy  
at a new low price.  
YOUR CHOICE \$75.

Now for the price of an ordinary watch you can have an extraordinary one. Bulova Accutron. Accurate to within a minute a month. With no winding over.

Never before could you have such a good time for such a good price.

WINANS JEWELRY

## Consumers Guide To International Air Travel Offered

Are you finally getting to take the trip abroad that you've been dreaming about and saving up for? How exciting! When you go, you'll want everything to flow as smoothly as possible, including your airline arrangements.

If the trip you're planning isn't a charter flight, the Civil Aeronautics Board has a new booklet to help you know what to look for when planning your scheduled flights and ironing out any problems that might arise. For your free copy of Consumers Guide to International Air-Travel write to the Consumer Information Center, Dept. 40, Pueblo, Colo. 81009.

To stretch your travel budget as far as you can, keep in mind that many international flights allow free stopovers along the way to the most distant point on your trip.

Also ask about discount fares. Most of these have restrictions — length of stay, accommodations included, travel on only certain days of the week — so you have to check the specifics very carefully with the airline or with your travel agent. And you have to pay attention to these restrictions. If you don't, the fare goes back up to the regular cost for the trip. That could mean the difference of a couple of hundred dollars, depending on the discount.

When you buy your ticket, remember that they are sold subject to change. You have to pay the fare in effect on the date your trip begins. If the fare increases after your reservations are made, or after you get your tickets, you'll be charged the additional amount.

You've got to buy your tickets within the time limits set by the airlines. If you don't pick up or pay for the tickets within the time limit, the airlines can cancel your reservations.

Be sure to check your tickets as soon as you get them. And, have any error corrected right away. Don't wait until you arrive at the airport to correct the mistake. It could cause you to forfeit a special fare.

Check-in time can vary from airport to airport. Be sure to ask the airlines or your travel agent for the check-in time on your flights. Failing to check in on time can result in cancellation of your reservation.

Subscribe today to The Standard!

# DANCER'S ATTIC SALE

## OCTOBER 7-8-9

Dexter, Stockbridge and Tecumseh Dancer's stores are shipping their sale merchandise to Chelsea for their biggest sale this year. All merchandise which is now 50% off will be marked down 20%. This is not junk clothing. This is name-brand fall, winter and spring merchandise.

MEN'S SUITS, SLACKS AND SHIRTS

WOMEN'S SLACK SUITS, DRESSES, SWEATERS, BLOUSES, SLACKS, etc.

LARGE SELECTION OF CHILDREN'S WEAR

SHOES FOR THE ENTIRE FAMILY

## All This at Over 50% Off

There will also be discounts on winter coats, shoes, and brand new fall merchandise.

There will also be loads of specials!

# DANCER'S

Chelsea's Friendly Dept. Store



## Girls Swimming Team Improving...

(Continued from page one)

Coach Reed expressed pleasure over the times of his swimmers, and the way they raced. He added, "You cannot teach kids to race, that is more natural instinct."

Based on the team's performance Thursday, Reed stated he now feels he may qualify as many as eight girls for the state championships if they continue to work harder, listen, and gain experience.

The girls' next meet will be at home Tuesday, 4 p.m., against Woodhaven. Another will follow at home Thursday, 4 p.m., with Milan's state champions.



(Political Advertisement)

**GEORGE STEEH**  
DEMOCRAT FOR  
Prosecuting Attorney

In our Prosecuting Attorney's office we need dynamic leadership, effective management and fair treatment of all citizens, including witnesses and victims of crime.

George Steeh has the energy, concern and ability to do the job for us.

"I'LL THINK ABOUT RETIREMENT . . .  
ONCE I GET THAT RAISE  
ONCE THE HOUSE IS PAID OFF  
ONCE THE CAR IS PAID OFF  
ONCE THE KIDS ARE THROUGH COLLEGE"

Retirement seems like a good thing to put off, especially when so many other things seem so much more urgent right now.

But there are a lot of people counting on you, and they will still be counting on you when retirement arrives. Farm Bureau can help you be ready.

The Individual Retirement Plan offered by Farm Bureau Insurance Group allows you to build for retirement—and do it partly with tax dollars.

Let us help build that future, by setting up just the right IRP plan for your family.



Dave Rowe

We're right in Chelsea at 107½ South Main Street. Call us at 475-8065.

**FARM BUREAU INSURANCE GROUP**

Farm Bureau Mutual • Farm Bureau Life • Community Service Insurance

## AUCTION SATURDAY, OCT. 9

Commencing at 1 p.m.

Located 8 miles south of Chelsea or 4 miles north of Manchester on Chelsea-Manchester Rd. or M-52. House No. 8735.

### FARM MACHINERY

John Deere "50" tractor with 2-way Powr-rol.  
John Deere "B" tractor with 2-way Powr-Trol.  
Oliver No. 5 1-row corn picker.  
John Deere "12A" 6-ft. combine with just overhauled motor.  
John Deere "14T" PTO baler.  
John Deere No. 5 semi-mounted mower.  
New Idea 3-bar side delivery rake.  
John Deere 13-hole drill with fertilizer and grass seeder.  
John Deere "290" 2-row corn planter, good condition.  
John Deere 2-14" trailer plow with high speed bottoms.  
John Deere marsh boom.  
John Deere rotary hoe.  
John Deere 6-ft. cultimulcher.  
Ford 4-section springtooth drag.  
John Deere double disc.  
John Deere 2-row cultivator.  
Hanson 6-row trailer type sprayer.  
New Idea "12A" manure spreader, good condition.  
John Deere "45" manure loader with snow bucket and gravel plate.

John Deere roll scraper.  
John Deere Gyramore with Powr-Trol.  
Case & Universal wagons with flat racks.  
Kilbros & McCurdy gravity boxes.  
American Standard 30-ft. single chain elevator with 1-h.p. electric motor.  
Double drum hay hoist with 3-h.p. motor.  
Heavy duty trailer frame.  
Cement mixer with electric motor.  
Mounted brush saw.  
Potato grader.  
Electric cyclone grass seeder.  
Gas engine.  
Three 5x8 hog farrowing coops on skids.  
9x14 chicken coop on steel skids.  
Round hog and pig feeders.  
Hog waterers and troughs.  
Sheep racks.  
2 ornamental windmills.  
Quantity oak and a few pieces of cherry lumber.  
400 bu. Mariner oats 1 year from certified.

### HOUSEHOLD and ANTIQUES

Roll top kitchen cabinet.  
Round Oak range.  
Lard press and sausage stuffer.  
Meat grinder.  
Glass churn.  
Corks.

Harpoon forks.  
Porch swing.  
Several other items too numerous to mention.

NOTE: A nice clean sale.

All machinery is ready to use and in good condition.

TERMS: Cash. Not responsible for accidents.

**PAUL FELDKAMP**  
OWNER

DALE HESELSCHWERDT, AUCTIONEER  
Phone (517) 536-4201

## Turner Finds Beautiful Spot in Washington's Olympic Park



YACHT BASIN: Among its many facets, Vancouver is best remembered as a modern, bustling port city. This is a view of Vancouver's Yacht Basin, as seen from Stanley Park.



THE BEAUTY OF BUTCHART GARDENS, some 13 miles from Victoria, B. C., are hard to describe. Flowers and shrubs were first planted in 1904 by Mr. and Mrs. Robert Butchart to hide the ugly scars of a limestone quarry. Today, the 30-acre site is one of the most attractive spots in the Pacific northwest, with thousands of varieties of plant life. At night, the gardens are illuminated and create a fairyland effect one will never forget.



VANCOUVER SKYLINE: Dominating the Vancouver skyline as one looks across a lagoon in Stanley Park, are these outlines of highrise apartments and office buildings. Vancouver is a subtle mixture of natural beauty and man-made achievement.

Advertise Your Auction in The Standard!

## PUBLIC AUCTION

ANTIQUES ★ MISCELLANEOUS  
HOUSEHOLD

Having sold our home, we will sell the following at public auction at 1304 Belmar Street, Ann Arbor, Michigan. Take Main Street to Snyder, across from Michigan Stadium, turn west to Belmar.

**Sunday, October 10th**

Commencing at 1:00 p.m.

3 antique oak plant stands.  
Oak dresser with bevel glass mirror.  
Lots of antique picture frames.  
Crock, jugs, large crock.  
Antique kitchen scale dated July 1877.  
Coffee table.  
1921 Atwater Kent radio with horn and extra tubes.  
Zenith Oceanic radio.  
Slide projector.  
Bolex movie camera.  
20-power telescope.  
Argus movie projector.  
2 pine blanket chests.  
3 metal beds.  
Kitchen table and 4 chairs.  
Sheffield carving set.  
Pots, pans.  
Miscellaneous dishes.  
Antique oak writing desk.  
Antique maple rocker with cane back, seat.

Antique walnut dresser with carved handles.  
2 old clocks.  
Sterling silver spoons.  
Flo blue dishes.  
Pressed glass.  
Depression glass.  
Hand-painted dishes.  
Kerosene lamp.  
Walnut plant stand.  
Cherry lamp table.  
Cane bottom chair.  
Erd tables.  
Older vanity.  
Telephone stand.  
Kirby vacuum sweeper with attachments, like new.  
Hide-A-Bed.  
Antique coffee grinder.  
Axe. Sledge.  
Wood planes.  
Brace bits.  
Work bench and vise.  
Bucksaw.  
Golf cart.

Many More Items Not Listed.

**Robert Barsantee**  
and  
**Fannie Tucker Estate**  
OWNERS

Braun and Helmer Auction Services  
Lloyd R. Braun, Ann Arbor, 665-9646  
Jerry L. Helmer, Saline, 994-6309

INSPECTION DAY OF SALE. TERMS: CASH OR CHECK  
NOTHING REMOVED UNTIL SETTLED FOR.  
NOT RESPONSIBLE FOR ACCIDENTS. LUNCH ON GROUNDS.

Dear Readers:

Today I greet you from the Hoh campground in Washington's Olympic Park.

Since my last report, I have covered a number of miles and have seen many sights. I hope the photographs accompanying this article will explain where I have been.

I continued on from Banff National Park in Alberta, through Yoho Glacier and Revelstoke National Parks on the trans-Canadian highway. From there I traveled to Vancouver, B.C., on the Pacific coast of Canada.

Vancouver is a big, modern city, and quite colorful. In Vancouver, Stanley Park is a real point of interest, with walking distance of the downtown area. This 1,000 acres of woodlands, with its nature trails where wild-life feeds from your hand, was dedicated in 1889 to the use and enjoyment of people of all colors, creeds, and customs. It is a must for anyone visiting the area (see pictures of Stanley Park).

Vancouver boasts so many points and things of interest, one could spend a week here and not see and do all that there is to do.

From Vancouver, I rode the ferry to Vancouver Island, landing at Nanaimo, and drove to Victoria, B.C.; the capital city of British Columbia. Victoria is clean and colorful. Vancouver Island started out as a crown colony of Great Britain but joined the Canadian Federation and became part of British Columbia in 1866. However, it is still very much like England.

There are many interesting things to do and see at Victoria, such as a visit to the Parliament buildings, with their statues and well-kept grounds. The large new museum is well worth a few hours of one's time just to learn about the native Indians and their way of life. I can't begin to describe it all in this article, but one point of interest some 13 miles from the downtown area of Victoria is Butchart Gardens. Don't miss it if you are in the Vancouver-Victoria area.

Butchart Gardens were started by Mr. and Mrs. Robert Pim Butchart in 1904 to hide an ugly scar on their estate left by a limestone quarry. Mrs. Butchart's hobby was to plant flowers and shrubs to hide this 30 acres of ugliness.

Today, it is the scenic wonder of all the Pacific northwest. There are thousands of varieties of flowers and shrubs in this garden, and it is so immaculately kept, one doesn't wonder it employs more than 150 grounds-keepers. The garden is lit at night to form a fairyland one will long remember.

One can ride a ferryboat from Victoria to Port Angeles, Wash., across the straits of Juan de Fuca, if you don't mind a long wait. I waited eight hours to get aboard the ferry. It is not generally as crowded other times of the year, but I attempted my crossing in the heart of the tourist season.

While I was waiting, I saw a sign in the lobby of the Empress Hotel across from the ferry dock, saying "Kiwanis meets today." So, I attended, and it was the Victoria downtown club, with a membership of 110, a real lively bunch of fellows. I was given a small banner for being the farthest from home and attending their club.

Entertainment was the Kiwanis Band from Regina, Saskatchewan. The band consisted of a hundred members, made up of boys and girls, from ages 8 to 18. The band has a full-time leader, and I must say, they are well trained and produced some real music. They were all in uniform that resembled the Royal Canadian mounted police dress uniform, "real red colorful jackets."

The Regina Kiwanis Band travels quite a bit through Canada and parts of the U.S.A. They are well known for their concerts in most of Canada and the western U.S.A.

I got aboard the ferry at 3:30 on July 27, and came here to Olympic National Park. I am sitting in what is known as a rain forest with huge, moss-covered trees of many varieties on all sides. It is damp and chilly as the fog is coming in off the ocean.

Olympic National Park is unique in that it has so much contrast compared to other parks. It changes from ocean, to rain forests, to alpine meadows, to glaciers above the meadows. Rain forests are dense growths of large trees, covered by thick

## Doll Dressing Contest Slated By AAFS

Dolls are again available for the annual Dress-A-Doll contest sponsored by Ann Arbor Federal Savings and Loan. Dolls may be picked up at Ann Arbor Federal in Dexter now.

The dolls are dressed each year for judging, then returned to Dexter to be used by the Dexter Family Service at Christmas time.

Dolls must be returned by Nov. 12 and the winners will be announced on Sunday, Nov. 28. The dolls will be on display in the lobby at AAFS during the Christmas holidays.

This year's dress categories are Nationality, Character, Fancy, Sensible, Knit and Crochet, and a special class for young people 15 years old and under.

### Britisher Hanged

Major John Andre was convicted and hanged for treason on Oct. 2, 1780. The British officer had been apprehended by three patriots two weeks before while on his way toward the British lines. In one of his boots were found detailed plans of the key American defenses at West Point and a pass signed by West Point's commander, General Benedict Arnold. Andre's mission was to negotiate the betrayal of West Point. He paid for his misdeed by death; Arnold escaped. Henry Ford Museum's Bicentennial exhibit, "The Struggle and the Glory," in Dearborn, includes a letter written by Benedict Arnold just a month before Andre's arrest in which Arnold reveals his plot to betray West Point.

moss where the sun never reaches. The forest floor is covered by numerous species of ferns and vines. Everything is damp and green with a 157-inch average rainfall per year making tree growth extremely rapid. Some of the Douglas fir, Sitka spruce, and the hemlocks, reach a height of 300 feet, and are eight to nine feet in diameter. Several are about 300 years old.

It is quite hard to get good pictures in a rain forest. I traveled miles over the trails of Hoh Rainforest, some of that distance with the park ranger who gave guided tours every day, and other times I joined the scores of people who came here to see the natural beauty of the area.

I must be running along toward Crater Lake National Park in Oregon. I will report on that area next.

Your wandering reporter,  
Don Turner.

### DAVIDSON STATION

19 SANDWICHES  
TO CHOOSE FROM

113 S. MAIN CHELSEA

## FILL YOUR FREEZER NOW AT LOW, LOW PRICES

**BEEF SIDES - FRONTS - QUARTERS**  
**PRICED AT A 10-YEAR RECORD LOW**  
**Call Dunbar for Prices Now!**

ALL-BEEF

**HAMBURGER** . . . 10 lbs. (1 lb. pkgs.) **lb. 65¢**

**PORK SIDES** . . . . . **lb. 79¢**

We Have A Few Lockers Still Available

**CUSTOM SLAUGHTERING and PROCESSING**

**HOME FREEZER MEATS Wholesale - Retail**

NO WAITING

We Accept Federal Food Stamps

ORDERS READY TO TAKE HOME

Discount to Civic Groups

### DEER PROCESSING

PHONE 426-8466

**DUNBAR'S DEXTER LOCKER**

8083 MAIN ST., DEXTER

PAUL DUNBAR, OWNER

## Thinking CARPET? Think SCHNEIDER'S



Visit the wonderful world of carpeting at Schneider's, one of the area's finest, full-service carpet stores, conveniently located in West Ann Arbor on Wagner Road between Jackson and Liberty.

Schneider's carries a broad selection of quality, name-brand carpets at prices consistently among the lowest in the entire area. Try us.

**662-9332**

OPEN MON & TUE NIGHTS TIL 8:00 PM

**SCHNEIDER CARPET CO., INC.**

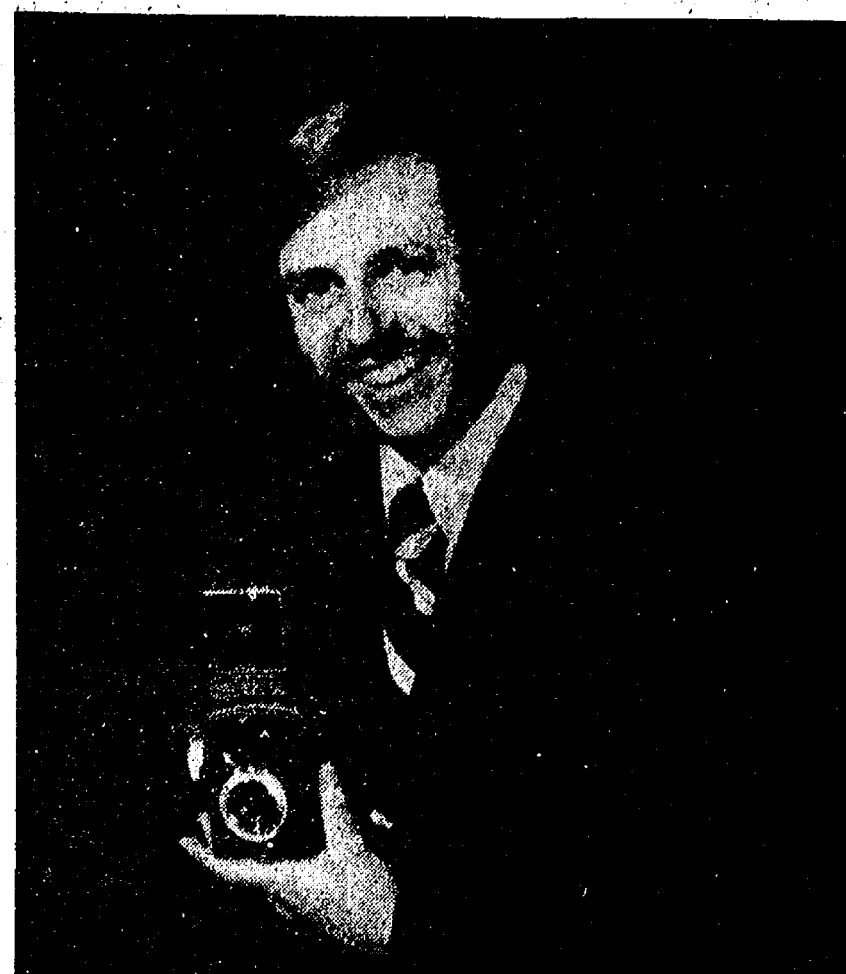
745 S. WAGNER RD. ANN ARBOR

## THE PHOTO DEPOT

PHONE 475-1687

107½ S. MAIN ST.

CHELSEA, MICH.

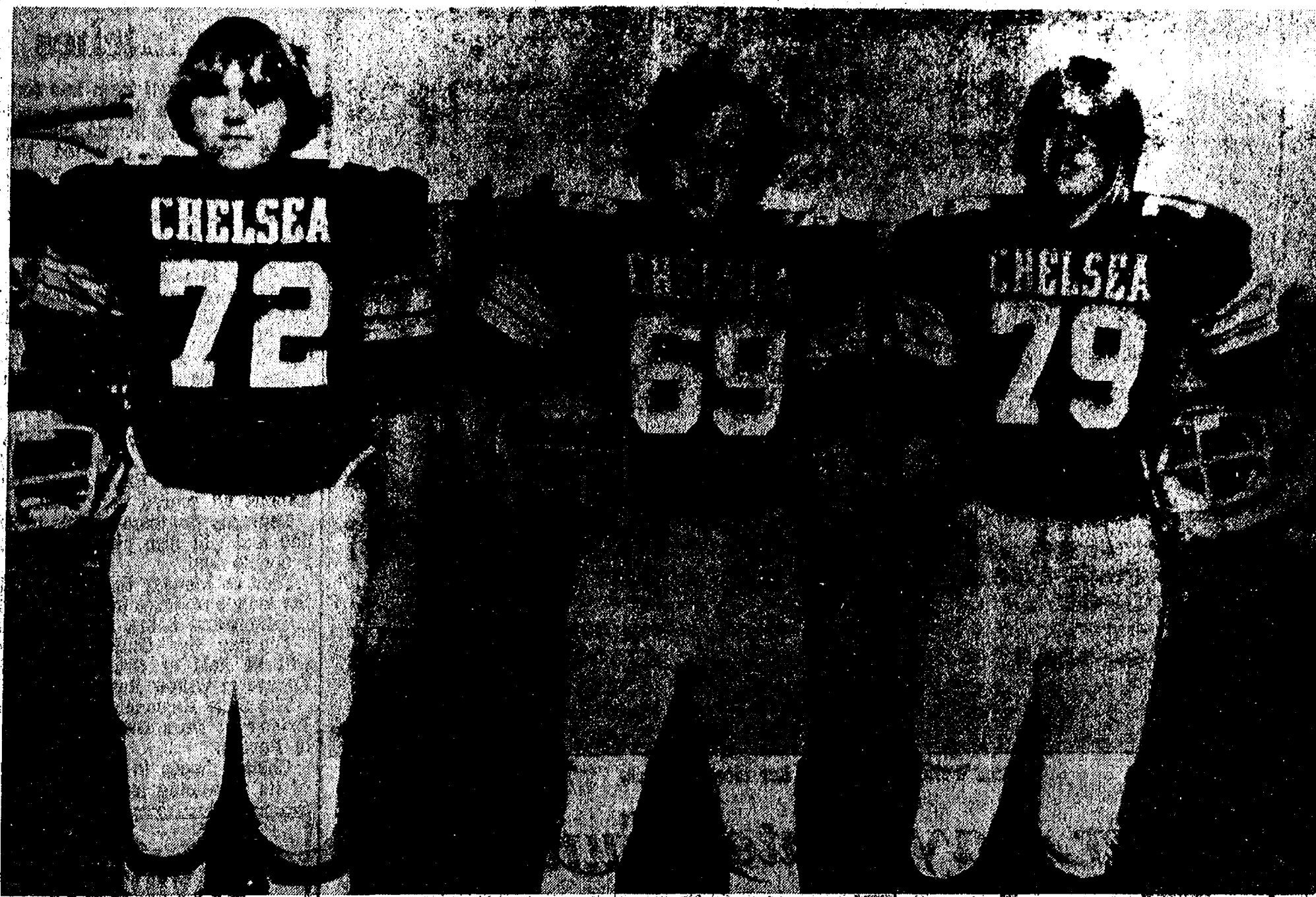


### TO THE BRIDE-TO-BE:

When the thrills of your wedding are in the past, the memories can only be preserved by pictures. Choose your wedding photographer wisely. CALL VERN OTTO at THE PHOTO DEPOT—18 years experience in wedding photography.



## ★ Gridders of the Week ★



**JOHN PUSH (72)**, senior tackle for the CHS varsity football squad, moved to Chelsea as a freshman to begin his football career. He first saw action on the freshman team, putting to use the traditional football skills he acquired from his father, who also played football in high school. Push, who has always been a tackle, likes the position because "you're in the middle of everything, there's the chance to do a lot of hitting on defense." Speaking on Chelsea's past performance this season, Push commented, "We have to get our offense together, we have to find the line, one that will go out there and block." He feels one of Chelsea's problems this year is a lack of experience on the offensive line, as a majority of the senior veterans graduated last year. The key game this season, according to Push, is with Brighton this Friday. "If we beat Brighton, we have a good chance for the conference title," he stated. While football demands hard training and a struggle to improve, the grueling preparation meets its reward on Friday nights when the game comes around in Push's opinion.

"It's worth it all on Friday nights," he divulged. He receives a lot of support from his younger sister, Nanette, a CHS freshman, who attends the games. Push is the son of Mr. and Mrs. Melvin Push of Old US-12.

**MARK SMYTH (69)** is a 5'10", 182-lb. guard, now in his second season on the Bulldogs' varsity squad. The CHS senior began football in 7th grade on the intramural team, and moved from the backfield on the JV squad, to his present position when drafted for varsity. Smyth made a key play in the Portland game two weeks ago, when he intercepted a pass to aid the team in its push to victory. A bit more pessimistic than his teammates, he claims, "By the looks of it now, Brighton will be conference champs unless we get our offense together." The proposition may not be altogether unrealistic, according to Smyth, since Chelsea has shown improvement on the field during practice this week. Football dominates the gridders' daily scope of interests. It has been that way since Smyth

first went out for sports in junior high, liked football best over-all, and kept with it. Family support is especially strong from Smyth's younger brother, Chris, a CHS junior and also a guard on the varsity squad. Key assistance during a game comes from Leon Brown, "because he's there all the time," he further explained. Smyth is the son of Mr. and Mrs. Roger L. Smyth of Waterloo Rd.

**RICK DAVIS (79)** has had a rather tumultuous career in football since he initially entered the sport as a freshman. The 6'3", 176-lb. center missed playing his first year, re-entered the field with high expectations this season, only to be benched with a knee injury. While Davis feels the Bulldogs need to do better than they presently are doing, he believes "they should come out ahead if the offense is strengthened." Football has been something he has liked to play ever since he was young, the gridders claimed. Davis, has a sister, Laurie, currently attending Beach Middle school, is the son of Mr. and Mrs. Roger Davis of S. Main St.

## Cross Country Team...

(Continued from page one)

set a new school record, just a second ahead of Phil Frame, who also broke the old CHS record.

Chelsea's number one runner, Dave Dawson, was prevented from making the contest an all-out sweep by the Chelsea harriers, as he was forced to sit out the meet with a bruised foot. The Bulldogs also missed the support of Scott Beyer, a key varsity runner, who was nursing a cold for four days.

Second-place Rick Haller's record time on the Willow Run course was 15:55. Also placing for the Chelsea win were Phil Frame third, 15:56; Dean Thompson, fifth, 16:21; Morris Johnson, sixth, 16:40; Chris Minick, seventh, 16:58; and Steve Kvarnberg, moved up from the JV squad, ninth, 17:48.

Thompson, Johnson, Minick, and Kvarnberg all set personal best times in the meet.

In the triangular dual on Tuesday, Chelsea downed Dearborn Robinson 18-41. Leading the way for Chelsea was Rick Haller, first. Other Chelsea finishers were Phil Frame, second; Dean Thompson, fourth; Morris Johnson, fifth; Chris Minick, sixth; and Steve Kvarnberg, seventh.

According to Coach Clarke, number one JV harrier, Steve Kvarnberg, "has been knocking on the varsity door," and in view of his performance Tuesday, will probably become a permanent varsity fixture.

Chelsea now stands 8-1 over-all. The squad will run against South Lyon Thursday, Oct. 7, at Inverness.

## Testimony Sought from County Women Victims of Physical Abuse

Washtenaw county women who have been the victims of physical abuse are invited to testify at a public hearing in Detroit next week. Professionals who come in to contact with this problem are also invited to testify.

The hearing will be held in Room F, MacGregor Center, Wayne State University, on Thursday, Oct. 14, from 2 to 5 p.m. and from 7 to 9 p.m. It is one of five hearings sponsored in the state this fall by the Michigan Women's Commission to collect information and identify the needs of victims of this kind of assault.

The sponsors "welcome personal testimony from victims of physical abuse and have made arrangements to assure their anonymity if they wish to appear in person," according to Patricia Cuzo Silea, executive director of the Commission.

The Commission will appreciate receiving written copies of all testimony. Women who wish to share information but who cannot attend may send it to the Michigan Women's Commission, 230 N. Washington, Lansing 48933. "All written material will become part of the record and will be considered in any recommendations the Commission may make," Silea says.

Women who have further questions may contact a member of the Washtenaw County Advisory Committee's Health Task Force at 665-5610, afternoons, until Oct. 14.

## Teachers To Participate In Schools Open House

After a meeting Tuesday evening, Oct. 5, the representatives' council of the Dexter Education Association agreed to participate in both the upcoming Open House at all schools, and the Parent-Teacher Conferences.

"Even though we have no contract or working agreement," said Jerry Smith, DEA negotiator, "we don't want to jeopardize our students."

**Faster gains from better FEEDS**

Calves get growing and gaining faster, on our balanced, fortified Calf Feed... enriched with needed vitamins, minerals.

Complete feeding rations for all your livestock, poultry.

**FARMERS' SUPPLY CO.**

PHONE 475-1777

**Metzger's German RESTAURANT**

IMPORTED & DOMESTIC BEERS & WINES

COCKTAILS

**NOW OPEN SUNDAYS**

11:30 a.m. 'til 8 p.m.

For more information call 668-8987

203 E. Washington, Ann Arbor

Between S. 4th & 5th Ave.

A Standard Want Ad Gets Results!

**FRESH MEATS**

**Jiffy market**

Big Enough To Serve You... Small Enough To Know You!

CORNER OF SIBLEY & WERKNER RDS. ... CHELSEA, MICHIGAN

PHONE 475-1701

HOURS: 7 DAYS A WEEK 7 a.m. to 10 p.m.

WE ACCEPT U.S.D.A. FOOD STAMPS

SALE PRICES EFFECTIVE Thurs., Oct. 7 thru Sun., Oct. 10

**COMPLETE SUPERMARKET**

COLD BEER WINE - LIQUOR

<p><b>U.S. GOVT. INSPECTED CHOICE BEEF</b></p> <p>U.S.D.A. CHOICE BEEF BLADE CUT</p> <p><b>CHUCK STEAK</b> 69¢ lb.</p> <p>U.S.D.A. CHOICE BEEF</p> <p><b>CENTER CUT CHUCK ROAST</b> 79¢ lb.</p> <p>U.S.D.A. CHOICE BEEF</p> <p><b>ENGLISH OR ARM ROAST</b> 1.09 lb.</p> <p>U.S.D.A. CHOICE BONELESS</p> <p><b>BEEF STEW</b> 1.09 lb.</p> <p>U.S.D.A. CHOICE BEEF LEAN</p> <p><b>SHORT RIBS OF BEEF</b> 59¢ lb.</p>			<p><b>JIFFY MARKET MEAT SERVICE</b></p> <p>U.S.D.A. CHOICE BEEF</p> <p>SIDES - FRONTS - HINDS</p> <p>WHOLE RIBS - WHOLE LOINS</p> <p>CUSTOM CUTTING - WRAPPING - FREEZING</p> <p>QUICK SERVICE ON BUTCHERING YOUR BEEF OR OURS</p>		<p><b>YOUNG, TENDER LEAN PORK</b></p> <p><b>PORK STEAK</b> 98¢ lb.</p> <p>Cut from Lean Butts</p> <p><b>PORK ROAST</b> 89¢ Boston Butt lb.</p> <p><b>PORK CUTLETS</b> 1.19 lb.</p> <p><b>PORK SAUSAGE</b> 1.09 Market Made lb.</p> <p><b>SPARE RIBS</b> 1.29 lb.</p>			
<p>AGAR</p> <p><b>SLICED BACON</b> 1.29 1-Lb. Pkg.</p>	<p>Young, Tender, Sliced</p> <p><b>BEEF LIVER</b> 49¢ lb.</p>	<p>FARMER PEET'S</p> <p><b>CHUNK BOLOGNA</b> 79¢ lb.</p>	<p>HERRUD</p> <p><b>SKINLESS WIENERS</b> 1.69 2-Lb. Pkg.</p>	<p>FARMER PEET'S</p> <p><b>ALL-BEEF FRANKS</b> 89¢ 1-Lb. Pkg.</p>	<p>U. S. CHOICE</p> <p><b>RIB STEAK</b> 1.49 lb.</p>	<p>ARMOUR</p> <p><b>LARD</b> 77¢ 2 lbs. Reg. 97c</p>	<p>ECKRICH</p> <p><b>BOLOGNA</b> 1.27 Regular or Thick Sliced</p>	<p>YOUNG, LEAN, TENDER</p> <p><b>Whole Pork Loins</b> 99¢ lb. Just Cut</p>
<p>Wonder</p> <p><b>Country Style WHITE BREAD</b> 1.00 3 1 1/4-Lb. Loaves</p>	<p>FARM MAID</p> <p><b>Homogenized FRESH MILK</b> 1.39 Gal. Crtn. or Plastic</p>	<p>U. S. NO. 1</p> <p><b>MICHIGAN POTATOES</b> 69¢ 10-Lb. Bag</p>	<p>FARM MAID</p> <p><b>ICE CREAM</b> 1.59 One Gallon</p> <p>Packed in half-gallon cartons</p>	<p>MIRACLE WHIP</p> <p><b>Salad Dressing</b> 89¢ Quart Jar</p>	<p>NEW. MORE THAN SOFT</p> <p><b>NORTHERN BATHROOM TISSUE</b> 69¢ 4-Roll Pkg.</p>			

GAS PUMPS & STORE OPEN 7 a.m. to 10 p.m. 7 Days a Week — U. S. Authorized Food Stamp Store — Daily & Sunday Papers



## Community Calendar

Chelsea Child Study Club, Tuesday, Oct. 12, 8 p.m., at home of Jean French, 11123 Boyce Rd. Discussion on teen-agers. Guests are welcome.

Rummage Sale, Friday, Oct. 8, 9-5, at Dexter United Methodist church.

Because of election day, Nov. 2, the Lima Township Board Nov. 1 meeting has been postponed to Nov. 8.

Chelsea Community Farm Bureau, Thursday, Oct. 14, 8 p.m., at the home of Mr. and Mrs. Carl Heller. Co-hostess, Marge LaRose.

Modern Mothers Oct. 12, 8 p.m., at the home of Sharon Hodgson. Tom Hodgson will speak on the topic of honey.

Busy Two-In-One 4-H Club monthly meeting 7:30 p.m., Oct. 12, at Dexter Town Hall. All members should attend to register for fall and upcoming summer projects.

Ann Arbor Area Ostomy Association, Thursday, Oct. 21, 7:30 p.m. at the Senior Citizens Guild, 502 W. Huron St., Ann Arbor. A representative from the United Surgical Supply Co. will be the featured speaker, and will demonstrate company appliances.

Kinder Club at the home of Helen Bulick, 8 p.m., Oct. 12. Dr. William Hawks will speak on visual needs of children. Guests welcome.

Regular monthly meeting of the Sylvan Township Board has been postponed to Oct. 12.

Limeaneers at the home of Mrs. Douglas Kennedy, Thursday, Oct. 7 for a pot-luck dinner at 12:30 p.m.

Rogers Corners Farm Bureau group Oct. 8, 8:30 p.m., at the home of Mr. and Mrs. Alex DeWahl.

Chelsea Band and Orchestra Boosters, 8 p.m., Thursday, Oct. 14, in the high school band room.

Sharon Township Board regular meeting first Thursday of each month.

Child birth preparation classes, LeMaze method, are being held at Chelsea Community Hospital Tuesday evenings. Contact Dee Burkel, 475-9316, for information.

Lyndon Township Planning Commission meets the second Thursday of the month at the Township Hall at 8 p.m.

Lyndon Township Board meets the third Thursday of the month at the Town Hall at 7 p.m.

AA and Al-Anon meeting, Monday evenings at Chelsea Hospital, 8:30 p.m. Closed meetings.

Chelsea Jaycees general membership meeting first Tuesday of each month, 7:30 p.m. at Chelsea Lanes. Monthly board meeting last Tuesday of each month, 7:30 p.m. at Inverness Inn.

Rummage Sale: North Lake United Methodist church, 14111 N. Territorial Rd., Friday, Oct. 15 and Saturday, 16 9 to 4. Bake sale Saturday only. adv. x48

The Ann Arbor Branch of the Embroiders' Guild of America Afternoon Group, Monday, Oct. 11, 1 p.m. in the Kelsey Museum, 434 S. State St., Ann Arbor. Program: "Antique Textiles and Conservation of Textiles." For further information, call 761-9115.

Lima Extension Study Club, Oct. 13, 10:30 a.m. in Lima Community Hall. Lesson: "Creative Women." Hostesses are Hilda Stierle and Lulu Beutler.

Chelsea Area Historical Society September meeting has been cancelled. First fall meeting will be 8 p.m. Monday, Oct. 11, in First Congregational church.

Chelsea Senior Citizens every Friday at St. Mary's school hall on Congdon St. First Friday of the month, cards, 7:30 p.m.; second Friday of the month, cards, 7:30 p.m.; third Friday of the month, pot-luck and cards, 6:30 p.m.; fourth Friday of the month, business meeting and cards, 7:30 p.m.; if there is a fifth Friday of the month, cards, 7:30 p.m.

Flea Market, North Lake United Methodist church, beginning May 3 and every Saturday thereafter 10 a.m. to 4 p.m. Lunch counter. Dealers wanted. adv. x46

Chelsea Co-op Nursery applications for 1976-77 classes are now being taken. For information, call Leslie Bowers, 475-1401. adv. x121

Lima Township Planning Commission regular meeting the third Tuesday of every month, 8 p.m. at the Township Hall.

Sharon Township Planning Commission regular meeting third Wednesday of each month.

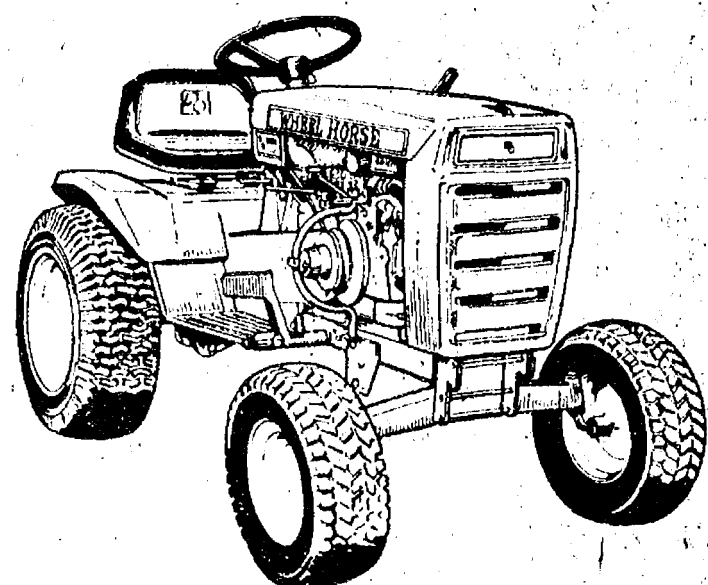
Sylvan Township Board meeting the first Tuesday of the month, 8 p.m., at Sylvan Township Hall.

American Legion Hospital equipment is available by contacting Guy Freysinger at 475-1961.

Humane Society of Huron Valley has dogs and cats for adoption. Owners may reclaim their lost pets. Phone 682-5535. Open from 9 a.m. to 5 p.m. daily; Sunday, 1 p.m. to 5 p.m. 100 Cherry Hill Rd., one-fourth mile south of Plymouth Rd. at Dixboro.

Telephone Your Club News To 475-1371.

## WHEEL HORSE lawn & garden tractors



## WHEEL HORSE SNOW MOVERS

From the 8 h.p. to the 19.9 h.p., there's a Wheel Horse snow mover for any snow removal need. You'll move that snow without back-breaking work with a horse... Wheel Horse, of course!

**GO GAMIBLES**  
110 N. MAIN ST. CHelsea MI 475-7472

## DEATHS

### Mrs. Eldon Harris Dies at Ann Arbor Hospital Following Lengthy Illness

Mrs. Eldon (E. Genevieve "Genny") Harris, 55, of 121 Worden, Ann Arbor, died at St. Joseph Mercy Hospital, Ann Arbor on Friday, Oct. 1, after a lengthy illness.

Born in Chelsea on Feb. 23, 1921, she was a daughter of Joseph and Myrtle Hafner Dreyer. She was married to Eldon Harris on Feb. 22, 1941. He survives. Mrs. Harris was a member of St. Thomas Catholic church of Ann Arbor.

Surviving besides her husband are two daughters, Mrs. Ronald (Penny) Hotzel and Mrs. Michael (Roberta) Stratos, both of Ann Arbor, her mother, Mrs. Joseph Dreyer of Chelsea and two brothers, Ambrose Dreyer of Gregory and Louis ("Corky") Dreyer of Ann Arbor. She was preceded in death by an infant daughter, Linda, in 1941.

Funeral services were held at 10 a.m. on Monday, Oct. 4 at St. Mary's Catholic church, Chelsea with the Rev. Fr. Robert Lunsford officiating. Burial followed in Mt. Olivet Cemetery. The Rosary was recited at 7:30 p.m. on Sunday, Oct. 3 at the Burghardt Funeral Home. The family suggests that those who wish to do so may make contributions in Mrs. Harris' memory to Dr. Nixon's Cancer Research Fund of St. Joseph Mercy Hospital.

### Mrs. Robert W. Kelly Dies Friday at Hospital After Extended Illness

Mrs. Robert (Vera L.) Kelly, 53, of 501 Maywood, died at the Chelsea Community Hospital on Friday, Oct. 1, where she had been a patient since July. Born Dec. 31, 1922 in St. Louis, Mo., she was a daughter of Albert and Alma Heuter Reed. She was married to Robert W. Kelly on April 10, 1944 at Corpus Christi, Tex. He survives. Also surviving are three daughters, Mrs. Clarence (Lois) Fredericzi of St. Louis, Mrs. Dennis (Terry) Morgan of Midland, and Marcia Kelly of Chelsea, as well as one son, Kevin M. Kelly of Chelsea, one sister, Nina A. Reed of Greenville, Ill., several aunts, uncles and cousins. She was preceded in death by one son, Robert W. Kelly, Jr., and one brother, Carroll M. Reed.

Mrs. Kelly had been employed previously by the Secretary of State's office in Chelsea, and more recently by the Village Motor Sales, Inc., as a secretary and accountant.

Funeral services took place on Wednesday, Oct. 6 in St. Louis, with Baumann's Colonial Chapel there in charge of arrangements. Burial followed in Calvary Cemetery, St. Louis. Local arrangements were made by Burghardt Funeral Home. The family suggests that those who wish to do so may make memorial contributions to the American Cancer Society.

## BIRTHS

A son, James Edward, to Doris and Rodney Branham of 16800 Waterloo Rd., Sept. 29 at St. Joseph Mercy Hospital, Ann Arbor. Maternal grandparents are Mr. and Mrs. George Beeman of Grass Lake, and paternal grandparents are Mr. and Mrs. James Branham of Chelsea.

A daughter, Sara Elizabeth, Sept. 12 at St. Joseph Mercy Hospital, Ann Arbor, to Mr. and Mrs. William D. Smith, 663 W. Middle St. Paternal grandparents are Mr. and Mrs. Dayton F. Smith of Ann Arbor. Maternal grandparents are Mr. and Mrs. James G. Ellis of Ann Arbor.

A daughter, Sharon Kay, to John and Nancy Bihlmeyer of Manchester, Oct. 1, in St. Joseph Mercy Hospital. Maternal grandparents are Mr. and Mrs. Alex Mshar of Munith, formerly of Chelsea. Paternal grandparents are Mr. and Mrs. Roy Bihlmeyer of Manchester.

Subscribe today to The Standard!

## Girls Varsity Lose Against Novi, Mason

CHS Girls varsity basketball team played to an early lead in their Southeastern Conference debut at Novi, Tuesday, Sept. 28, only to lose their momentum in later quarters, as Novi's defending league champions moved in to counter Chelsea's surge and garner the victory, 43-34.

Instrumental to Chelsea's loss was the team's failure to keep up their rebound performance. Novi capitalized on the weakness for the conquest.

High scorers for Chelsea were Penny Collinsworth and Lori Miles with 3 points each. Shelley Warren followed with 7. Kim Moore and Nanette Push 4 each, Teresa Breza, 2, and Karen Keiser, 1.

Returning home to play against Mason on Thursday, Sept. 30, the Chelsea cagers ran into another slump, losing their third consecutive game of the week to non-league Mason, 37-44.

Although the game was close throughout, with Chelsea behind by only two points in the final quarter, the home team was unable to position for dominance, and fell behind. The cagers are now 1-3 for the season.

High scorers for Chelsea against Mason were Penny Collinsworth with 12 points, supported by Shelley Warren, 9; Lori Miles, 7; Sue Heydlauff, 4; Karen Keiser, 3; and Nanette Push, 2.

## CB Radios Stolen from Locked Cars

Chelsea Police Department has issued a public warning to CB owners in the area to take added precautions in protecting and guarding their property, following the theft of two CB radios from vehicles parked outside of Chelsea Lanes late Saturday evening, Sept. 30.

Both 23 channel radios were valued between \$180 and \$200. To gain entry, thieves forced the left side vent of a 1975 Chevy Blazer, owned by Gary L. Bice of Grass Lake, and pried open the left side door of a 1974 Buick station wagon registered to Edwin Greenleaf, owner of Chelsea Lanes. Officers theorize wire cutters, a pry bar, and screwdrivers were utilized to remove the radios.

Although Greenleaf's Buick had been parked under lights and was highly visible, no suspects were reported as seen in the area all night.



Mrs. Welton Bohne and her team of oxen.

## Pioneer Day Slated Sunday At Waterloo Farm Museum

Turning leaves and "October's bright blue weather" are reminders that it is again time for the annual Pioneer Day at the Waterloo Area Farm Museum. This year Mrs. Welton Bohne and the team of young bullocks that she has broken will be up from Waterloo for Pioneer Day at the Farm Museum, which will be held Sunday, Oct. 10, from 12:30 to 5 p.m. The museum is at 9998 Waterloo-Munith Rd., three miles west of Waterloo Village.

Friends and members will be making butter, brooms, sauerkraut, baskets, lace, etc. There will be woodcarvers, blacksmiths, and fiddlers. Bill Landis with his

Please Notify Us

In Advance of

Any Change in Address

## Golf Team Wins Last Five Matches

The Chelsea golf team has come on strong in the past week, winning its last five league matches. The team has defeated Novi twice, 133 to 178 and 175 to 177; Brighton, 168 to 168; Milan, 169 to 172; and South Lyon, 169 to 173.

The team finished runner-up to Pinckney in the nine-team Grass Lake Invitational last Saturday. Monday they performed well in the Pinckney Invitational by placing third in a field of 11 teams. The team's success can be attributed to good team effort and excellent depth.

Jeff Politch, Brian Lewis, Joe Ewald, Charlie Bridges, Bill Spaulding, Mike Eisele, and Jeff Rabbitt all scored very well.

Thursday the team travels to Saline and will also play Detxer in a double dual.

Then on Monday they will finish the league matches in a meet with Brighton and Saline at Inverness. Tuesday the Conference Meet will be held at Green Oak Golf Course at Willow Run.

The State Regionals will be held Friday at Burr Oak Golf Course in Parma.

Chelsea hopes to do well in all of its remaining matches.

## DAVIDSON STATION

BEST PIZZA IN TOWN

475-2675

**GENERAL ELECTRIC FACTORY SALE DAYS!**

**UP TO \$35 CASH TO INSTALLATION ALLOWANCE\***  
direct from General Electric on purchase of any of these appliances between September 27 and November 27, 1976



**\$35 Installation Allowance** on General Electric BUILT-IN DISHWASHERS Models GSD950 & GSD1050  
**\$35 Installation Allowance** on any GE Built-In P-7 Self Cleaning Oven



**\$35 Installation Allowance** on any GE Built-In GLASS COOKTOP  
**\$10 Installation Allowance** on any GE Built-In CONVENTIONAL COOKTOP

\*Not valid direct to the purchaser the big cash allowance shown that can be used toward installation if you buy from September 27 through November 27, 1976.

**HEYDLAUFF'S**  
113 N. Main St., Chelsea Ph. 475-1221

FOR THE PERSON WHO LIKES TO DO-IT-YOURSELF

## WASHTENAW COMMUNITY COLLEGE offers

### Saturday's Mechanic for Men & Women 059

Meets Saturdays, starting October 16, 1976, (Six (6) Weeks, 9:00-12:00 Noon. An introduction to the basic principles of operation and service of today's automobiles (NOT TO INCLUDE TUNE UP). Students will be able to perform service operations on their own vehicles, such as: Lubrication, Safety Inspection, and General Vehicle Upkeep.

ANYONE INTERESTED IN ENROLLING IN THIS COURSE MUST CALL THE AUTOMOTIVE SERVICE CENTER AT 434-1555 AND PRE-REGISTER. CLASS SIZE WILL BE LIMITED TO 18. YOU MUST BE PRE-REGISTERED TO BE IN THE COURSE. COST: \$20.00.

LOCATION: Automotive Service Center  
5115 Carpenter Road, Ypsilanti, Michigan  
Phone: 434-1555





PETER FLETCHER (left), chairman of the Michigan Department of Transportation, presents the keys to Chelsea's new shuttle bus to Kiwanis Club president Julius Blaess. The Kiwanians spear-

## Methodist Home Plans Sunday Open House

Residents and staff of the Chelsea United Methodist Retirement Home will host a Sunday open house Oct. 10, 2-4 p.m. at the facility. The event is sponsored by the Retirement Home Friends, a Detroit based auxiliary.

Guests are invited to tour the premises, and view photographic displays of recent Home activities which will be placed at various locations throughout the residence. Some village apartments, the Heritage Room, and the Crippen Building, an apartment building and recreation area, will all be open to visitors.

In the Heritage Room, Methodist Home residents will be dressed in sun bonnets and old-fashioned costumes as they serve refreshments to their guests amid an exhibit of historical handworks, interesting momentos, collectibles, and antique treasures.

Currently, 250 people reside in the Methodist Home and actively participate in the Chelsea community.

When in doubt about a controversial point, say nothing and possibly gain or retain a friend.

## School Board Briefs

At a regular meeting of the Chelsea Board of Education Monday, present were Daniel Feeney, Hodgson, Tobin, Stirling, Schaffer, Superintendent Cameron, Business Manager Mills, Dr. Virginia Rezmierski, Henry DeYoung and attorney Peter Flintoft. Guests were Charles Kelly and Pat Clarke.

Meeting called to order at 8 p.m. by vice-president Daniels. The minutes of the meeting of Sept. 20 were approved as presented.

Dr. Virginia Rezmierski presented a video tape recording of a program titled "Also Our Children," regarding Special Education. A discussion of the Special Education program followed.

The resignation of Dr. Virginia Rezmierski as Special Education Director for Region V was accepted. Region V includes Chelsea, Dexter and Manchester.

The contract of Henry DeYoung as Special Education Director for Region V was approved.

The budget hearing on the 1977-78 Operating Budget was set for 7 p.m. on Monday, Oct. 25, in the Board Room.

Robert Schaffer was appointed delegate and Ann Feeney as alternate to the Michigan Association of School Boards.

The millage election was discussed. Board members will be speaking at a number of meetings during the next two weeks.

The board terminated the George Bergman hearing and directed that the terms of the agreement of Aug. 30 be completed.

The parking problem at the high school was discussed. Representatives of the Student Council, their advisor and Principal Smith will be invited to the meeting of Nov. 1 to discuss the situation.

Maintenance of school buildings and property was discussed.

The regular Special Meeting of the board will be held at 8 p.m. on Tuesday, Oct. 19 in the Board Room instead of Oct. 18.

Meeting adjourned at 10:45 p.m.



KIWANIS CLUB OFFICERS INSTALLED: These stalwart Kiwanis Club leaders participated in an installation of officers ceremony during the Chelsea Kiwanians' regular meeting Monday evening, Oct. 4. From left are Fred Mammel of Ann Arbor who handled the installation ceremony, Julius Blaess, Chelsea Kiwanis Club past president; Paul Frisinger, newly elected president; Eugene Duhamel, president-elect; and Elmer Kiel, vice-president.

## JV Gridders Ramble Over Novi, 29-12

Novi's junior varsity gridders never escaped the Bulldog grip as Chelsea ravaged the Wildcats, 29-12, Thursday, Sept. 30.

Although Novi was first to score on a 60-yard run in the opening quarter, Al Augustine crossed the goal line on a four-yard run for Chelsea, kicked for an extra point, and put Chelsea in the lead, 7-6.

Chuck Young returned a punt 65 yards to score again for the Bulldogs, and close down the first quarter, 13-6.

Chelsea dominated again in the second quarter as Bob Ball barreled through the Novi line for one yard and a touchdown.

Novi attempted to close the gap in the third quarter, scoring on

a 30-yard run to make it 12-19. However, the Bulldogs roared back as Chuck Young scrambled for a 35-yard touchdown run. Al Augustine ran home two more points and Chelsea rested at 27-12.

Dan Gerstler blocked a Novi punt late in the third quarter, forcing the ball to fly out of the end zone for a safety and two more points.

Both teams played to a draw in the fourth quarter to end the scoring at 29-12 for another Bulldog victory.

Leading tacklers for Chelsea were Al Augustine, 7; Shawn Murphy, 6; Scott Powers, 5; Ben Kincer, 5; Dan Gerstler, 5; Bob Ball, 5; Lucas Lovely, 4; Scott Price, 3; Chuck Young, 2; John Labarbara, 2; Bill Moore, 2; and Doug Clark, 2. Bart Bauer, Jessie Cabura, Tom Bareis, Steve Marriott, and Gary Thornton, 1 each. Outstanding tackles were performed by Bart Bauer and Doug Clark.

Offensively, Chelsea rushed for 283 yards, twice the yardage gained in the team's first two games combined. According to Coach Jon Schaffner, the offensive line of Jeff Eibler, Scott Powers, Dan Gerstler, Lucas Lovely, John Labarbara, Ben Kincer, Scott Price, and Bill Moore opened up nice holes for the backs to run through.

Chelsea will return to the field to face undefeated Brighton, in a home game scheduled for 7 p.m. Oct. 7.

## Retirement Party Slated for Lima Township Treasurer

Hilda Pierce of Jackson Rd., Lima Township treasurer for many years, will be feted at a retirement party in her honor, Sunday, Oct. 17, 1-4 p.m., at Lima Township Hall.

The public is invited.

The search for truth in government is a field of endeavor that is not too often overworked.

## Frosh Gridders Romp Over Michigan Center

The passing of John Dunn and Mike Wood, and some fine runnings by Sam Picklesimer helped the Bulldog freshmen coast by Michigan Center by a score of 12-14 Tuesday night.

Dunn had touchdown passes of 25 yards to Wally Soltysjak and 20 yards to Mike Killelea and hit each with an extra point.

Wood threw a 22-yard TD strike to Brad Knickerbocker and Picklesimer scored on runs of 8, 40, and 34 yards.

Leading this offensive charge was the line anchored mainly by Karl Bell, Dan Rowe, Dave Morris, Keith Stillion and Andy Weir.

The defense, not to be outshone, also turned in a fine effort. The Cardinals scored on a one-yard run just before half-time and added six more on a 52 yard pass late in the third period.

The Bulldog defense scored the first points of the game when Mike Killelea trapped Michigan Center's quarterback in the end zone for a safety. Picklesimer also played a strong defensive game, intercepting two passes. Randy Risner and Mark Cole also snatched Cardinal passes away.

Stalwarts in the defensive line which kept Center's backs tied up all night were Dan Rowe, Tom Gilbreath, Tom Houle and Steve Hawker.

In spite of a number of penalties against the Bulldogs, it was a fine over-all team performance. Coach Bainton, obviously pleased with the results, praised the team's efforts. "We had a chance to give all our players quite a bit of playing time and they re-

sponded with a fine performance. This was without a doubt an excellent team effort."

The freshmen played Brighton at home Tuesday, then go to South Lyon on Oct. 12 and host Tecumseh on Tuesday, Oct. 19. The latter game was originally scheduled for Wednesday, Oct. 20.

**Pump 'N' Pantry**  
Weekly Special

Eckrich

skinless  
Hot Dogs  
98¢

1 lb. package

Holsum Hot Dog Buns

Package of 8

59¢

(Effective Oct. 8 - Oct. 14)

Available at these Pump 'N' Pantry locations:

295 S. Main - Chelsea

DIVISION OF GALLUP-SILKWOORTH COMPANY

# RICK'S MARKET

20490 M-52

"The Store with the Spartan on the Door"

Phone 475-2898

SPARTAN  
DILL PICKLE  
SLICES

Sweet sliced cukes

1-Lb. Jar 45¢

IRISH SPRING  
DEODORANT  
SOAP

5-Oz. Bath Size Bar 37¢

ALL  
for  
Automatic  
Dishwashers

35-Oz. Box 92¢

12-OZ. CANS  
7-UP  
DIET 7-UP  
Orange - Grape

6 pac 99¢

ECKRICH FRESH  
PORK  
SAUSAGE

1-Lb. Roll 99¢

SPARTAN FROZEN  
ORANGE  
JUICE

16-Oz. Can 49¢

BANQUET FROZEN  
FRIED  
CHICKEN

2-Lb. Pkg. \$1.99

CARNATION  
COCA  
MIX

30-Oz. Jar \$1.89

KELLOGG'S  
FRUIT LOOPS

15-Oz. Box 99¢

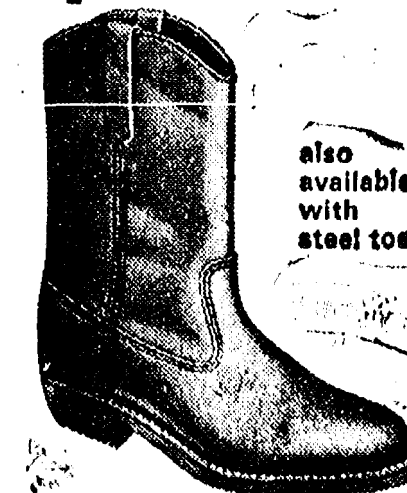
**TUESDAY BAKERY SPECIAL:**  
**WHITE BREAD** .. Loaf 49¢

**RICK'S HOT BREAD DAILY**

Weekdays by 3:30 p.m. Sat. & Sun., by 10:30 a.m.

(QUANTITY RIGHTS RESERVED)

equipment  
operators!



Here's a man's boot every step of the way! Rugged, handsome, ready for a rough day's work anytime. Easy on the feet, too. Stop by - try on Pecos by Red Wing and be convinced!

RED WING

FOSTER'S  
MEN'S WEAR  
Ph. 475-1606 Chelsea, Mich.

# TRUCK-TRAILER PARTS & ACCESSORIES

## SIGNAL STAT

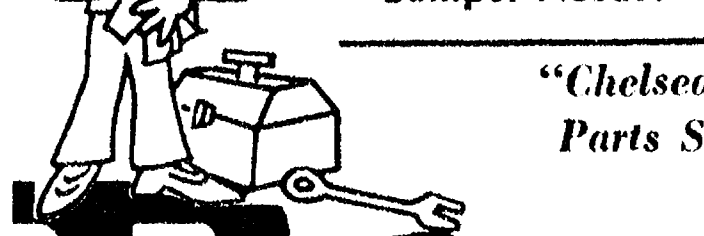
West Coast Mirror  
Mirror Heads  
Blind Spot Mirrors  
Clearance Lights  
Tail Lights  
Turn Signal Lights  
Dome Lights - Head Lights  
License Plate Lights  
Reflectors  
Fire Extinguishers

## TRAILER WIRING KITS

TRAILER CONNECTORS  
WIRE CONNECTORS

## HEAVY DUTY FLASHERS

Plus Many More  
Items for  
Your Trailer and  
Camper Needs!



## EMERGENCY FLARES

15 min. - 20 min.

## TRUCK

## MUD FLAPS

12" x 18" 24" x 30"  
20" x 20" 24" x 36"

## HYDRAULIC AXLE JACKS

2-Ton \$13.95  
3-Ton \$19.95  
5-Ton \$25.95  
8-Ton \$31.50  
12-Ton \$36.50

## TRAILER BEARINGS TRAILER SEALS WHEEL BEARING GREASE

"Chelsea's full Service-All Service  
Parts Store for Over 15 Years"

**Boyer**  
AUTO SUPPLY INC.

108 E. MIDDLE STREET

• FREE PARKING AT REAR • PHONE 475-1366

Open daily  
8 a.m.  
to  
5:30 p.m.  
Saturdays  
8 a.m.



**Ads  
Taken  
fill 1 p.m.  
Tuesday**

# PUT IT IN THE WANT ADS FOR RESULTS

**Just  
Phone  
475-1371**

## WANT ADS

### The Chelsea Standard

#### WANT AD RATES

PAID IN ADVANCE—All regular advertisements, 25 cents for 25 words or less, each insertion. Count each figure as a word. For more than 25 words add 3 cents per word for each insertion. "Blind" ads or box numbers add \$4.00 extra per insertion.

CHARGE RATES—Same as cash in advance, with 25 cents bookkeeping charge if not paid before 1 p.m. Tuesday preceding publication. Pay in advance and send cash or stamps and save 25 cents.

DISPLAY WANT ADS—Rate, \$1.40 per column inch, single column width only. 8-point and 14-point light type only. No borders or fold-ins. Minimum 1 inch.

CARDS OF THANKS or MEMORIALS—Single paragraph style, \$1.50 per insertion for 30 words or less; 3 cents per word beyond 30 words.

COPY DEADLINE—1 p.m. Tuesday week of publication.

ERRORS—Advertisers should check their ads the first publication. This newspaper will not be liable for failure to publish an ad or any typographic errors in publication except to the extent of the cost of the ad for the first week's insertion. Adjustment for errors is limited to the cost of portion of the ad wherein the error occurred.

PIANO TUNING, Chelsea and area. Facilities for reconditioning and rebuilding. Used piano sales; reconditioned grands and verticals. E. Ecklund, 426-4429. x50tf

Sand Gravel

### KLINK EXCAVATING

Backhoe  
Road Work - Basements  
Trucking - Crane Work  
Top Soil - Demolition  
Drainfield - Septic Tank  
Trenching, 5' up  
Industrial, Residential, Commercial  
CALL 475-7631 13tf

### STEP UP TO KOZMA CONSTRUCTION

And  
Step  
Down  
In  
Price  
LICENSED  
BUILDER  
FREE ESTIMATES  
COMPLETE  
CONSTRUCTION  
SERVICES  
CALL  
LEN KOZMA  
475-7452 29tf

WANTED HAY—First and second-cutting hay. Must be well baled. Charles Trinkle, call 475-7798, evenings. x15tf

### Lakefront - 1 Acre

UNIQUE, contemporary, builder's home with 200 ft. of prime frontage on North Lake. Private residential area with mature trees and garden area. 22 minutes from Ann Arbor. Immediate occupancy. Chelsea schools. \$72,500. Owner, 475-9569. x18  
GARAGE SALE Oct. 8-9. Ceramic and molds, trash and treasures. 203 Beaufort St., Manchester. x17

## WANT ADS

PATCHING and PLASTERING  
Call 475-7489. 83tf

Custom Built Homes

Oh! We Remodel too

U—can count on us

N—o Job Too Small

T—rim Inside & Out

R—ough-In Only If

Y—ou Want to Finish

S—iding Aluminum, 5" Gutters

I—mmediate Attention

D—ALE COOK & CO.

E—stimates, Free

BUILDERS

Please Call  
475-8863

DALE COOK 17tf

### GEORGE W. SWEENEY HEATING

Licensed Contractor  
Furnaces, air conditioning,  
and sheet metal work.

Phone 475-1867 20tf

CAR RENTAL by the day, week-end, week or month. Full insurance coverage, low rates. Call Lyle Christwell at Palmer Motor Sales, 475-1301. 25tf

### Fireplace Builder

Field stone mason, block and brick mason, tuck pointing.  
FREE ESTIMATES  
Call 475-8025 after 3 p.m.

Patrick Grammatico 240tf

J. R. CARRUTHERS  
LICENSED  
RESIDENTIAL BUILDER  
CUSTOM HOMES  
ADDITIONS/FIREPLACES  
PATIO  
ROOFING/SIDING/REPAIRS  
475-7234  
CHELSEA 30tf

LOWREY BERKSHIRE deluxe program, with home study course. \$1,800. Ph. 984-6194. x52tf  
HORSESHOEING—Experienced horseshoer now shoeing in area. Bob Smithers, (517) 851-8479. x45tf

### 53 ACRES

Of beautiful rolling land with small lake on property. Property could be split by purchaser. Chelsea school district.

### ED COY REALTY

Ph. Dexter 426-3948 x17

BRITANNY SPANIELS for sale. Born June 23, '76, AKC registered, wormed, bew claws removed. Both parents excellent hunters. Puppies' pedigrees carry both Field and Show Champions. \$65 and \$75. Call (517) 769-2237, Jackson. x18

## WANT ADS

### LEONARD REITH

#### Master Plumber

#### Licensed Electrician

#### Hot Water Heat

18238 N. Territorial

Rd.

Chelsea, Mich. 48118

Phone: 475-2044 52tf

### WEST LAKE

BEAUTIFUL, scenic, one-acre building site with 150 feet frontage on West Lake. Perk approved. \$12,500. Call 475-9569. x18

### CHELSEA

CHARMING EARLY AMERICAN 3 bedrooms, country kitchen with fireplace, completely new interior with new wiring, plumbing and heating, approx. 1 acre, Village of Chelsea, \$43,500. x18

35-ACRE FARM, Grass Lake, 9-room home, barn plus outbuildings.

1.24 ACRES, 4-bedroom 2-year-old tri-level, dining room, family room, fireplace, 2-car garage, Pinckney schools, \$52,900.

WOLF LAKE—3-bedroom year-round, dining area, fireplace, 1 1/2 baths, additional extra lot at rear. Grass Lake schools.

147 1/2-ACRE FARM—Remodeled farm home, Waterloo Rec. Area, Chelsea schools.

CORNER LOT—3 bedrooms, dining room, fireplace, 1 1/2 baths, Village of Pinckney.

VACANT  
10 ACRES—Freer Road.  
40 ACRES—Fletcher Road.  
5 ACRES—Sharon Hollow Road.  
5 OR 10 ACRES—Orban Road.  
40 ACRES—Easton Road.

### FRISINGER

REALTORS

Chelsea 475-8681

Eves:  
Herman Koenn 475-2613  
Bob Koch 426-4754  
Paul Frisinger 475-2621  
George Frisinger 475-2908 x16tf

'65 PLYMOUTH for sale—Running condition. Also, Junior Girl Scout dress, hat, sash, tie and handbook. Never worn or used. Call 428-8895. x17

FOR SALE—'74 Mercury Cougar XR7. Excellent one-owner condition. Palmer Ford, 475-1301. x17

### Special Purchase

LEVIS for GALS

Originally \$19.00

Now \$12.00

Navy and Brown Gabardine

Junior Sizes 5-13

### VOGEL'S

107 S. Main, Chelsea

475-1606 x17

FOR SALE—Two G70-14 snow tires, mounted on 14-inch Ford rims, \$40. Call Patty, days 991-8519, after 6 p.m., 475-8306. x17

### YES

WE ARE MAKING

LONG-TERM FARM

REAL ESTATE

LOANS

SEE US

Federal

LAND BANK

Association

P. O. Box 7006

Ph. 769-2411 3645 Jackson Rd.

Ann Arbor, Mich. 48103

## WANT ADS

### VACUUM CLEANERS

Authorized Electrolux  
sales and service.

James Cox

428-8444, or 428-8086

118 Riverside Dr., Manchester 48tf

### Complete

Body Repair

Service

Bumping - Painting  
Windshield and Side Glass  
Replacement

Free Pick-up & Delivery  
Open Monday Until 9

CONTACT DON KNOX  
FOR FREE ESTIMATE

### Village

Motor Sales, Inc.

CHRYSLER - DODGE

PLYMOUTH - DODGE TRUCKS

Phone 475-8661

1185 Manchester Rd., Chelsea

Hours: 8 a.m. to 5:30 p.m.

Tues. thru Fri. Until 9 Monday

9 a.m. to 1 p.m. Saturday x14tf

### Headquarters for

RED WING

WORK SHOES

Foster's Men's Wear 40tf

### For Rent OFFICE SPACE IN DEXTER

NEW, carpeted, air-conditioned,  
up to 890 sq. feet. Reasonable.  
Call 426-3933, 9 a.m.-5 p.m. 1tf

### Special of the Week

1976 OLDS DELTA 88

4-Dr. Hardtop

Air Cond., 6,000 Miles

\$5295

### USED CARS

1974 BUICK Estate Wagon, 2-seat,  
air cond., 30,000 miles. \$3495

1973 FORD LTD 4-dr. hardtop, air  
cond. \$2495

1973 CHRYSLER Newport 4-dr. sedan,  
air cond. \$2295

1972 BUICK Electra 225 4-dr. hardtop,  
air cond. \$2395

1972 OPEL Sport Coupe 2-dr. hardtop,  
automatic \$1495

1972 CHEVROLET Biscayne, 4-dr.  
sedan \$895

1971 BUICK LeSabre Custom 4-dr.  
hardtop, air cond. \$1295

### HOURS:

Mon., Tues., Wed., Fri.,

8:00 a.m.-5:30 p.m.

Thurs., 8:00 a.m.-9:00 p.m.

Sat., 8:00 a.m.-1:00 p.m.

### SPRAGUE

Buick-Olds-Opel, Inc.

1600 S. Main St., Chelsea

Ph. 475-8664 16tf

### Volunteers Wanted

To answer phone calls for Chelsea Area Transportation System (CATS). Those interested in volunteering call Sam Johnson, 475-7472 or 475-7366, Louis Burghardt, 475-1674, or Betty Koch, 475-8582 between 9 and 1. 17

### ALBER FARMS

Orchard & Cider Mill

Sweet cider, maple syrup, barrels and kegs. Apples, now picking McIntosh, Cortland, Jonathan, Connel Red, Red and Yellow Delicious.

Hours: 9 a.m. to 6 p.m.

13011 Bethel Church Rd.

428-7758 x11tf

CLOSE OUT—Blue Simplicity Rottel, 3 h.p., reg. \$299.95, sale price, \$199.95, 5 h.p., reg. \$365.95, sale price, \$239.95. Also 28 in. riding lawn mower, reg. \$649.95, sale price, \$499.95. Hackney Hardware, 8105 Main St., Dexter, 426-4009, x17

## WANT ADS

### Automotive

### Rust Proofing

### Cars and Trucks

### Village

Motor Sales, Inc.

CHRYSLER - DODGE

PLYMOUTH - DODGE TRUCKS

Phone 475-8661

1185 Manchester Rd., Chelsea

Hours: 8 a.m. to 5:30 p.m.

Tues. thru Fri. Until 9 Monday

9 a.m. to 1 p.m. Saturday 21tf

### Demonstrators

'76 ASPEN SE station wagon, 318,  
auto., p.s., p.b., air cond.,  
stereo, speed control. SAVE!

### Used Trucks

'75 DODGE W-100 Sno-Filter, 360,  
auto., p.s., p.b., Meyers plow,  
low mileage. \$5195

'75 DODGE D-200, 318, 3-speed,  
p.b., 18,100 miles. \$3395

'75 RAMCHARGER, 2-wheel drive,  
360, auto., p.s., p.b., air cond.,  
roll bar, white wheels. \$5195

'74 DODGE CB-300 Kary van, 318,  
3-speed, p.b. \$3295

'74 DODGE TRAVCO surfer van,  
318, auto., p.s., p.b., carpeted  
floor, 4 doors. \$4295

'74 DODGE D-100, 318, auto., p.s.,  
p.b., dual tanks. \$2995

'74 DODGE 1/2-ton, 6-cyl., 3-speed,  
low mileage. \$2595

'74 DODGE D-200 Club Cab, 318,  
auto., p.b., air cond., AM-FM,  
aux. tank, cover, 31,000 miles. \$3995

'73 CHEVY 3/4-ton, 4-wheel drive,  
350, auto., p.s., p.b. \$2995

'71 CHEVY C-50, cab and chassis,  
350, 4-speed, 8.25x20 — 10 tires. \$2195

'74 PLYMOUTH Fury I 4-dr., V-8,  
auto., p.s., p.b., air. \$1195

'73 CHRYSLER New Yorker  
Brougham, 2-dr. hardtop, V-8,  
auto., p.s., p.b., power locks,  
air cond., radials. \$2395

'73 DODGE Royal Sportsman, 360,  
auto., p.s., p.b., air cond., AM-FM,  
aux. heater, speed control. \$3395

'72 DUSTER coupe, 6-cyl., auto.,  
one owner. \$1195

'72 PLYMOUTH Fury III 2-dr.  
hardtop, 360, auto., p.s., p.b.,  
air cond. \$1495

'72 CHEVY Nova 2-dr., 6-cyl., 3-  
speed. \$1795

'69 CHEVY 4-dr., V-8, 3-speed, low  
mileage. \$295

'68 OLDS 4-dr., V-8, auto., p.s.,  
p.b., air cond., Michelin tires. \$495

### Village

Motor Sales, Inc.

CHRYSLER - DODGE

PLYMOUTH - DODGE TRUCKS

Phone 475-8661

1185 Manchester Rd., Chelsea

Hours: 8 a.m. to 5:30 p.m.

Tues. thru Fri. Until 9 Monday

x16tf

FOR SALE—'71 Cutlass 3-2-dr.  
hardtop. Full factory equipment.  
Excellent condition. No reasonable  
offer refused. Palmer Motors, 475-  
1301. x17

### HILLTOP, INC.

PLUMBING - HEATING

ELECTRICAL

Robert Shears, Master Plumber

Cold Weather

Is Coming!

Call for an appointment today.

Have your furnace checked, have  
your cottage winterized, be ready,  
don't be sorry.

### FREE ESTIMATES

On New Furnace Installation

8316 WERKNER RD., CHELSEA

Ph. 475-2949 x14tf

RUMMAGE SALE—North Lake  
United Methodist church, 14111  
North Territorial Rd., Friday, Oct.  
15 and Saturday, Oct. 16, 9 to 4.  
Bake sale Saturday only. x18

FOR SALE—Black dirt and peat  
mixture, excellent for lawns,  
planters, shrubs, trees, by the  
yard or bushel. You pick up or we  
deliver. Also good clean fill dirt.  
Diane Landwehr, 18000 Cavanaugh  
Lake Rd., Chelsea 475-8480. x17

FOR RENT to responsible married  
couple, beautiful country home  
on 7 rolling acres, located 8 miles  
south of Chelsea (and I-94), 4 miles  
north of Manchester. 5 bedrooms,  
2 full and 2 half baths, living room,  
dining room, family room (with full  
wall fireplace), 1st floor laundry,  
kitchen with dining area, intercom  
system throughout, full basement,  
3-car attached garage. Available  
Nov. 1. Please write Francis J.  
Cappaert, Box 671, Troy, Mich.  
48069. This lovely home will be  
rented reasonably to the right party.  
x17

## WANT ADS

FOR RENT—Fair Service Center  
for meetings, parties, wedding  
receptions, etc. Weekdays of  
week-ends. Contact John Wellnitz,  
phone 475-1518. x11tf

P











# Test yourself.

## Are you really being represented in Congress?

### CRIME AND VIOLENCE

1. Crime and violence are serious problems in America. Do you believe that we should make it easier for convicted criminals in federal prisons to obtain parole?

☐ A. Yes ☐ B. No

### JOBS

2. We need more jobs. Do you favor government make-work jobs, paid for by taxpayers, or permanent jobs in the private sector?

☐ A. Government Jobs ☐ B. Private Jobs

### DEFENSE

3. The Soviet Union has equalled and, in some areas, surpassed the United States in military preparedness. Do you favor defense spending at the levels requested by the President, or do you favor drastic cuts in defense spending?

☐ A. Drastic Cuts ☐ B. At levels requested

### WELFARE REFORM

4. Reform of the welfare system is essential. Do you think that households above the poverty line should be entitled to food stamps?

☐ A. Yes ☐ B. No

### GUN CONTROL

5. The Bill of Rights guarantees the "right to bear arms." Do you favor mandatory registration of all guns, or do you think we should enforce the laws we have already?

☐ A. Mandatory registration. ☐ B. Enforce laws we have

How did you vote? The present Congressman from the Sixth District has voted in Congress for the positions marked "A." Are your views being represented in Washington?

Here's what Cliff Taylor believes we must do:

1. fight crime vigorously and grant paroles cautiously.
2. create good jobs in the private sector, not government make-work jobs.
3. maintain our military strength to discourage aggression.
4. reform the welfare system to eliminate cheating and to help the truly needy.
5. enforce our present gun laws, and not further intrude in the lives of law-abiding citizens.

If you agree with him, you ought to vote for him.

# Cliff Taylor

Citizen for Congress.  
Republican.

*This time, Taylor*

1. Roll call 239 (5/21/75)
2. Roll call 53 (2/10/76)
3. Roll call 575 (10/2/75)  
Also Armed Services  
Committee report on HR 12438
4. Roll call 698 (11/13/75)
5. Letter to a constituent (5/5/76)

authorized by the Cliff Taylor for Congress Committee,  
P. O. Box 189, East Lansing, MI 48823



## Boat Safety Course Offered

A six-lesson "Boating Skills and Seamanship" course for power boaters will be conducted by Ann Arbor's Flotilla 12-19, of the U. S. Coast Guard Auxiliary.

Classes will be held in Room 1810-LCN at the Washtenaw Community College, Ypsilanti, from 7:30 to 10 p.m., beginning Oct. 18. Class sessions will be held each Monday evening from Oct. 18 through Nov. 29 (skipping Nov. 15).

A nominal charge will be made to cover the cost of the text book and instructional materials. A certificate will be presented to those who successfully complete the required work.

Pre-registration is required, due to limited classroom space. Students must pre-register no later than Oct. 11, by calling 761-3880 during the day, or 434-0052 after 7 p.m.

Subjects which will be covered by the course are: introduction and safe ways to enjoy boating, the sailor's language and boat handling, legal requirements and rules of the road, aids to navigation, and marlinpike seamanship (knots and splicing).

Class co-ordinator for the course will be Louise C. Walker, Public Education Officer and Flotilla Commander for Flotilla 12-19, assisted by other instructors from the flotilla.

## + Services in Our Churches +

**ST. PAUL UNITED CHURCH OF CHRIST**  
The Rev. R. J. Ratzlaff, Pastor  
Saturday, Oct. 9—  
9:00 a.m.—Confirmation.  
10:30 a.m.—Confirmation.  
Sunday, Oct. 10—  
9:00 a.m.—Church school.  
10:30 a.m.—Worship and church school.

3:00 p.m.—Friendship Circle.  
5:30 p.m.—Friendship Circle.  
Wiener roast at the Hamilton home.  
Tuesday, Oct. 12—  
3:30 p.m.—Joyful Noise.  
6:00 p.m. to 10:00 p.m.—Spaulding for Children.  
7:30 p.m.—Council.

Wednesday, Oct. 13—  
9:30 a.m.—Junior Choir.  
7:30 p.m.—New member orientation at parsonage.  
8:00 p.m.—Chancel Choir.  
Thursday, Oct. 14—  
10:00 a.m. to 2:30 p.m.—Women of the Church Fellowship and activities.  
3:00 p.m.—Ann Arbor Jackson Executive Board.  
7:30 p.m.—Spiritual Life.

**ST. THOMAS EVANGELICAL LUTHERAN**  
Ellsworth and Haab Rds.  
The Rev. Jerome Dykstra, Pastor  
Sunday, Oct. 10—  
9:30 a.m.—Sunday school and Bible class, Confirmation class.  
10:45 a.m.—Young People's Worship Service.

Tuesday, Oct. 12—  
10:00 a.m.—Bible Study.  
7:30 p.m.—Sunday school teachers.

Wednesday, Oct. 13—  
8:00 p.m.—Choir rehearsal.

**GREGORY BAPTIST CHURCH**  
The Rev. Paul White, Pastor  
Every Sunday—  
9:45 a.m.—Sunday school.  
11:00 a.m.—Morning worship.  
6:00 p.m.—Young people.  
7:00 p.m.—Evening worship.  
7:30 p.m.—Thursday mid-week worship service.

**FIRST UNITED METHODIST CHURCH**  
The Rev. Marvin H. McCallum, Pastor  
Friday, Oct. 8—  
9:00 a.m.—Girl Scouts in the Social Center.  
6:00 p.m.—Greg Osborn-Stephanie Aldrich wedding rehearsal.  
Saturday, Oct. 9—  
9:00 a.m.—Local church goals setting session in Manchester.  
8:00 p.m.—Greg Osborn-Stephanie Aldrich wedding.  
Sunday, Oct. 10—  
10:00 a.m.—Worship service (nursery provided).

10:20 a.m.—Church school, 4-year olds through sixth graders.  
11:00 a.m.—Coffee and punch hour. Junior high church school.  
11:10 a.m.—Senior high church school in the Litteral Room.  
Monday, Oct. 11—  
7:00 p.m.—Work Area on Evangelism.

8:00 p.m.—Council on Ministries in the Educational Unit.  
Tuesday, Oct. 12—  
8:00 p.m.—Finance Committee in the Educational Unit.  
Wednesday, Oct. 13—  
9:00 a.m.—Clay Ornaments and Wall Hangings Workshop, first of two sessions, in the Educational Building.

12:00 noon—Brown Bag Communion in the Educational Building.  
3:30 p.m.—Kinder Choir.  
4:00 p.m.—Praise Choir.  
8:00 p.m.—Chancel Choir.  
Thursday, Oct. 14—  
9:00 a.m.—United Methodist Women Executive Committee in the Litteral Room. Sitter provided.

1:00 p.m.—Church Women United Executive Committee in the Litteral Room.  
6:30 p.m.—United Methodist Women, Ann Arbor District, annual meeting at Belleville.

**ZION LUTHERAN CHURCH**  
Corner of Fletcher, Waters Rds.  
The Rev. John R. Morris, Pastor  
Sunday, Oct. 10—  
9:00 a.m.—Sunday school.  
10:15 a.m.—Worship.

**NORTH SHARON BIBLE CHURCH**  
Sylvan and Washburne Rds.  
The Rev. William Ensen, Pastor  
Every Sunday—  
11:00 a.m.—Worship service.  
10:00 a.m.—Sunday school. (Nursery will be available.) Junior church classes.  
6:00 p.m.—Senior High Youth meeting. Youth Choir.  
7:00 p.m.—Evening worship services. (Nursery available.) All services interpreted for the deaf.

Every Wednesday—  
7:00 p.m.—Bible study and prayer meeting. (Nursery available.) Bus transportation available: 428-7222.

**IMMANUEL BIBLE CHURCH**  
145 E. Summit St.  
The Rev. LeRoy Johnson, Pastor  
Every Sunday—  
9:45 a.m.—Sunday school, nursery provided.  
11:00 a.m.—Morning worship, nursery provided.  
6:00 p.m.—Evening worship.  
Every Wednesday—  
7:00 p.m.—Family hour, prayer meeting, and Bible study.

**CHURCH OF CHRIST**  
13661 Old US-12 East  
Evangelist John M. Hamilton  
Every Sunday—  
10:00 a.m.—Church school.  
11:00 a.m.—Worship service. Nursery will be available.  
6:00 p.m.—Worship service.  
Every Wednesday—  
7:30 p.m.—Bible study.

**FIRST UNITED PRESBYTERIAN CHURCH**  
Unadilla  
The Rev. T. H. Liang, Pastor  
Every Sunday—  
9:45 a.m.—Sunday school.  
11:00 a.m.—Worship service.

**WATERLOO VILLAGE UNITED METHODIST CHURCH**  
8118 Washington St.  
The Rev. Glenn Kjellberg, Pastor  
Every Sunday—  
10:00 a.m.—Sunday school.  
11:15 m.—Worship service.

**SALEM GROVE UNITED METHODIST CHURCH**  
3320 Notten Rd.  
The Rev. Gerald R. Parker, Pastor  
Every Sunday—  
9:30 a.m.—Sunday school.  
10:30 a.m.—Worship service.

**NORTH LAKE UNITED METHODIST CHURCH**  
The Rev. David Stiles, Pastor  
Every Sunday—  
8:30 and 10:00 a.m.—Worship service.  
**ST. JACOB EVANGELICAL LUTHERAN CHURCH**  
12501 Riethmiller Rd., Grass Lake  
The Rev. Andrew Bloom, Pastor  
Every Sunday—  
9:00 a.m.—Worship service.  
10:15 a.m.—Divine services.

**ST. JOHNS EVANGELICAL AND REFORMED CHURCH**  
(United Church of Christ)  
Francisco  
The Rev. Virgil King, Pastor.  
Every Sunday—  
10:30 a.m.—Church services.

**FIRST ASSEMBLY OF GOD**  
The Rev. Richard Coury, Pastor  
Every Sunday—  
9:45 a.m.—Sunday school.  
11:00 a.m.—Worship service.  
6:00 p.m.—Evening worship.  
Every Wednesday—  
7:00 p.m.—Christ's Ambassadors. Missionettes. Bible meditation and prayer.

**CHELSEA BAPTIST CHURCH**  
377 Wilkins St.  
The Rev. James Stacey, Pastor  
Every Sunday—  
9:45 a.m.—Sunday school for the whole family.  
11:00 a.m.—Morning worship service and children's church.  
7:00 p.m.—Evening service, informal singing, sharing, study and discussion. (Nursery care provided for all services.)

Home Bible Studies each week in the homes of the leaders.  
Teen Ministry, Sunday at 8 p.m. and study groups during the week.

**FIRST CHURCH OF CHRIST SCIENTIST**  
1883 Washtenaw Ave., Ann Arbor  
Every Sunday—  
10:30 a.m.—Sunday school, morning service.

**ST. MARY CATHOLIC CHURCH**  
The Rev. Fr. David Philip Dupuis, Pastor  
Mass Schedule:  
Every Saturday—  
4:00-5:00 p.m.—Confessions.  
7:00 p.m.—Mass.  
Immediately after 7 p.m. Mass—Confession.

Sunday, Sept. 5—  
7:00 a.m.—Altar Society Communion.  
Every Sunday (summer schedule)—  
7:00, 9:00, 11:00 a.m.—Mass.

**OUR SAVIOR LUTHERAN CHURCH**  
1515 S. Main, Chelsea  
The Rev. William H. Keller, Pastor  
Sunday, Oct. 10—  
9:00 a.m.—Sunday school and Bible class.  
10:30 a.m.—Worship service.

**ST. BARNABAS EPISCOPAL CHURCH**  
20550 Old US-12  
The Rev. Fr. Jerrold F. Beaumont, B.S.P.  
Every Sunday—  
10:00 a.m.—Holy Communion first, third and fifth Sundays, and 8 p.m. every Wednesday.  
10:00 a.m.—Morning prayer. Second and fourth Sundays. Church school and nursery every Sunday.  
Every Wednesday—  
9:00 p.m.—Study and discussion groups.

First Wednesday of every month Bishop's Committee.  
Third Thursday of every month—Episcopal church women.

**ST. JOHN'S UNITED CHURCH OF CHRIST**  
Rogers Corners  
Every Sunday—  
10:30 a.m.—Worship service.

**BETHEL EVANGELICAL AND REFORMED CHURCH**  
(United Church of Christ)  
Freedom Township  
The Rev. Roman A. Reineck, Pastor  
Every Sunday—  
10:00 a.m.—Worship service.

**FIRST UNITED METHODIST Parks and Territorial Rds.**  
The Rev. Glenn Kjellberg, Pastor  
Every Sunday—  
9:15 a.m.—Morning worship.  
10:00 a.m.—Sunday school.

**BAHA'I FIRESIDE**  
Every Thursday—  
8:00 p.m.—At the home of Toby Peterson, 705 S. Main St. Anyone wishing to learn about the Baha'i faith is welcome.

**METHODIST HOME CHAPEL**  
Chaplain Ira Wood, Pastor  
Every Sunday—  
8:45 a.m.—Worship service.

## Area Dairy Leaders Boost Co-Op Month

Local dairy farmer leaders of Michigan Milk Producers Association have joined a state-wide effort to build a better understanding and appreciation of farmer co-operatives.

The campaign is being conducted primarily during October, which traditionally has been recognized as Co-op Month in Michigan and elsewhere throughout the nation, according to Steve Bristle, president of the Saline Local of MMPA.

"We think it's important that everyone have a clear understanding of what co-ops are and what they are for," Bristle said. "For example, we find that not everyone realized that farmer co-ops are owned and controlled by the farmer members they serve."

Among other things, co-ops enable farmers to purchase supplies and services and to market their products with increased efficiency, Bristle noted.

"By helping to boost their productivity and efficiency, co-operatives help family farmers compete and stay in business," Bristle said. "Obviously, that's important to us. But it's also important to consumers because the family farm still is the most efficient food producer and the type of operation that's depended on for most of our agricultural production."

"We hear a lot these days about big corporations being involved in agriculture and to some extent they are. In Michigan, though, and especially when it comes to dairy farming, the family farm still is the most important," Bristle added.

Many agricultural economists and other experts have predicted that the survival of the family farm hinges on the continued effectiveness and strength of farmer co-operatives, Bristle said.

Bristle urged anyone wishing to arrange a program related to Co-op Month or anyone wanting additional information to contact Diane Horning at 428-8610.

The National 4-H Service Committee supports 4-H through donor-sponsored programs, educational aids, National 4-H News, a supply service and year-round public information services.

**CHURCH OF JESUS CHRIST OF LATTER-DAY SAINTS**  
Meetings at  
St. Barnabas Episcopal Church  
20500 Old US-12  
Every Sunday—  
11:00 a.m.—Priesthood meeting.  
12:30 p.m.—Sunday school.

**CONGREGATIONAL CHURCH**  
(United Church of Christ)  
The Rev. Carl Schwarm, Pastor  
Every Sunday—  
10:30 a.m.—Worship and Sunday school.

(Political Advertisement)

**RE-ELECT HILARY E. L. GODDARD**  
COUNTY TREASURER

Experience and ability make the difference!

## THE "BIG YIELD" TOP FOUR FROM GREAT LAKES HYBRIDS

No one knows better than you — in farming, profit is the name of the game. The better your yield, the bigger your profits. So plant the seed corn tested and proven for yield and profits — GREAT LAKES HYBRIDS!

3102 (90 day) A performance record that's hard to match; out-yields many hybrids of later maturity.

407-2X (95 day) Tops hybrids of 10 days longer maturity; takes to higher populations and fertility programs.

4122 (95 day) New breed, mid season single; unequalled seedling vigor, standability and yield.

5802 (107-109 day) High population, full-season single. Excellent yield, standability and disease resistance.

Consult your '77 GLH Catalogue for more proven and profitable varieties.

**\$25.00!**

SAVE \$25.00! See coupon for even bigger profits for you from 'Big Yield' GLH!

**MERKEL BROTHERS**

## Physical Exercise, Conditioning Clinic Slated

The Ann Arbor Recreation Department is sponsoring a Physical Exercise and Conditioning Clinic on Thursday, Oct. 7 and 14, 7:30 to 10 p.m., at Pioneer High School, 601 W. Stadium Blvd.

The clinic is open to all adults — teachers, coaches, parents. It will consist of slides, demonstrations, discussions, questions, and answers. A \$2 fee will be assessed.

The objective is to make participation and coaching better and safer through current knowledge and understanding of the nature of conditioning, training, and exercise. The practical application of research findings will serve to

eliminate inappropriate exercises and to build a conditioning program designed to make a positive contribution to the participant's fitness level. The clinic encompasses programs and activities to meet the needs of youth and adults, male and female.

Registrations will be accepted by mail at 2250 S. Seventh St., Ann Arbor 48103.

Considered one of our nation's major handicapping disabilities, hearing loss problems rob at least one out of every 15 Americans of their ability to communicate clearly with friends and loved ones, hearing specialists report.

## NOW OPEN!

### THE PRINT SHOP

405 N. Main St., Chelsea, Michigan  
Specializing in Instant Printing

No Job Too Small

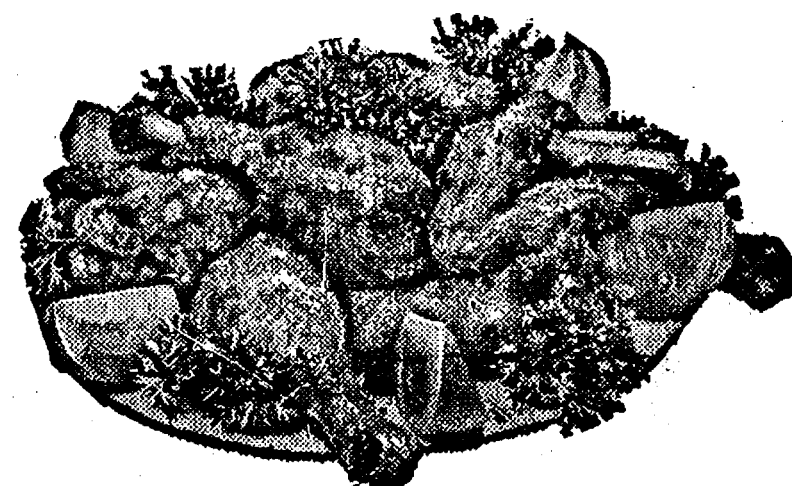
ALSO AVAILABLE

Envelopes  
Letterheads  
Business Cards  
Forms  
Announcements  
Wedding Invitations  
Social Stationery  
Brochures

Stop in and see us or call 475-1389  
Open Monday-Friday, 8:30 a.m. to 5:30 p.m.

25% OFF LIST PRICE ON ALL CHRISTMAS CARD ORDERS DURING MONTH OF OCTOBER

## CHICKEN is still SPECIAL on TUESDAY NIGHTS at the CAPTAINS TABLE



All you can eat of Deep-fried Chicken, French Fries, Biscuits and Honey, plus a trip to our delicious Salad Bar.

**\$2.95**

**The Captains Table**

8093 Main St., Dexter  
426-3811

Mon.-Wed. 6 a.m.-9 p.m.

Thurs., Fri., 6 a.m.-10 p.m.

Saturday, 7 a.m.-9 p.m.

NOW SERVING

**Spaghetti and Meat Ball Dinners**

Includes Salad and Roll  
EACH SATURDAY EVENING

## Judge Dorothy Comstock Riley is judged "Outstanding"

Retain for Court of Appeals

RETAIN JUDGE RILEY COMMITTEE

## There's No Substitute for Protein in a Hog Ration

Protein builds meaty hogs and puts weight on fast. Protein-deprived hogs take longer to reach market weight and time is money. Don't waste corn. Balance it with Wayne 40% Pig Balancer and make the best possible use of facilities, time, grain and your investment. It's ideal for pigs from 50 to 125 lbs.

Eat More Pork

**McCALLA FEED SERVICE**

12875 Old US-12 Chelsea  
PHONE 475-8153

"Government must be open. If we intend to rebuild confidence in the government process itself, policy must be shaped through the participation of Congress and the American people."

—Jimmy Carter  
June 16, 1976

**HELP SHAPE YOUR OWN FUTURE**

**VOTE FOR**

**JIMMY CARTER FOR PRESIDENT**

**WESTERN WASHTENAW DEMOCRATIC PARTY**

We Need Your Help!

Chelsea: 475-9597

Ann Arbor: 668-6028

Political Advertisement

**BOSSO Carpet Cleaning**

October brings Halloween. So be careful that colored-paper decorations don't contact your carpet. They can cause stains. We recommend Host, the new method of cleaning carpets without water. The carpet is dry and ready to walk on immediately. Use our Host Electric Up-Brush. It's easy. Clean 40 sq. yds. only \$9.95.

**MERKEL BROTHERS**





# BOWLING NEWS

## Rolling Pin League

Standings as of Oct. 5

	W	L
Egg Beaters	13	7
Mixers	13	7
Grinders	12	8
Sugar Bows	11 1/2	8 1/2
Spooners	11	9
Kookie Cutters	11	9
Blenders	11	9
Dish Rags	11	9
Beaters	10	10
Jolly Mops	10	10
Pots	10	10
Poachers	10	10
Coffee Cups	9	11
Ripms	9	11
Sporadic Spatulas	8	12
Kitchen Kapers	7	13
Moppper Uppers	7	13
Jelly Rollers	6 1/2	13 1/2

500 series: S. Parker, 544; L. Voita, 532; J. Shepherd.

425 and over series: D. Klink, 428; P. Patterson, 457; E. Williams, 442; M. Gross, 473; P. Harrook, 443; R. Musbach, 443; P. Wurster, 455; C. Dmoch, 427; P. Goins, 450; D. Anderson, 467; D. Dirlam, 447; R. Dils, 455; T. Doll, 441.

150 and over games: T. Doll, 80; M. Cox, 153; R. Dils, 160; 60; S. Parker, 170, 194, 174; D. Dirlam, 162; N. Bradley, 158; A. Classon, 157; C. Kieis, 162; L. Voita, 161, 185, 186; R. Musbach, 161; M. Wojcik, 165; P. Wurster, 160, 176; C. Dmoch, 164; H. Smith, 151; P. Smith, 161; P. Goins, 173, 159; D. Anderson, 157, 78; J. Shepherd, 154, 163, 188; P. Roberts, 156; E. Williams, 171; J. Griss, 181, 159; P. Harrook, 162; P. Patterson, 165; K. Ham, 151; D. Klink, 170; G. Clark, 51; B. Wolfgang, 171; B. Haist, 50.

## Leisure Time League

Standings as of Sept. 30

	W	L
Unpredictables	12	4
Four Stoges	11	5
Sugar Loafers	11	5
Day Dreamers	10	6
Misfits	9 1/2	6 1/2
Crackpots	9	7
Slowpokes	7 1/2	8 1/2
Roadrunners	7	9
Holy Rollers	5	11
Lady Bugs	5	11
The Lakers	5	11
Afternoon Delights	4	12

500 series: D. Dault, 522.

200 games: K. Haywood, 201.

400 series: N. Primrose, 412; M. O'Donnell, 459; B. Tison, 408; S. Brown, 415; B. Marsh, 420; L. Haller, 401; J. Anderson, 460; C. Engler, 411; J. Staphis, 419; Centilli, 427; D. Thompson, 408; S. Friday, 455; K. Haywood, 498; G. Wheaton, 428; R. Musbach, 401; S. Bowen, 433; S. Weston, 435.

Games 140 and over: K. Herman, 141, 161; E. Williams, 145, 142; J. Mead, 153; N. Primrose, 146; M. O'Donnell, 156, 178; C. Hoffman, 150; S. Weber, 142; B. Tison, 172; S. Brown, 147; B. Marsh, 144, 140; L. Haller, 176; D. Dault, 154, 187, 181; J. Anderson, 160, 164; J. Delagrangre, 158; C. Engler, 163; J. Staphis, 153; R. Forner, 159; E. Heller, 141, 144; J. Riemenschneider, 148; D. Messing, 144; P. Whitesall, 154; S. Centilli, 164, 166; D. Thompson, 153; S. Friday, 163, 147, 145; K. Haywood, 152, 201, 145; G. Wheaton, 141, 148; R. Musbach, 141; A. Rivard, 145; S. Brown, 141, 154; V. Meyer, 143; C. Kuzon, 145; S. Weston, 169, 177; P. Muncer, 145.

## Senior House League

Standings as of Oct. 4

	W	L
S. J. Custom Leather	24	4
Mark IV Lounge	19	9
Village Motors	19	9
Luke's Sporting Goods	17	11
Chelsea Lumber	17	11
Chelsea Grinding	16	12
Bauer Builders	16	12
Frank Grohs Chevrolet	15	13
Schneider's Grocery	15	13
Washenaw Crop Service	14	14
Sylvan Center	13	15
Seitz's Tavern	12	16
Dexter Automatics	11	17
Gambles	11	17
Dana	8	13
Sams, Inc.	9	19
Walt's Barber Shop	9	19
Deansburro	0	21

525 and over series: R. Kelly, 589; G. Lawrence, 527; D. Bauer, 557; P. Fletcher, 563; J. Arnold, 553; D. Cumper, 541; M. McAllister, 564; D. Weatherwax, 540; G. Beeman, 592; J. Banks, 534; K. McCalla, 575; L. Bauer, 539; J. Harrook, 537; M. Poertner, 567; R. Kiel, 560; G. Knickerbocker, 568; L. Sanderson, 532; R. Kern, 555; D. Murphy, 549; M. Sweet, 575.

210 and over games: D. Murphy, 212; M. Sweet, 223; P. Fletcher, 214; G. Lawrence, 210; D. Bauer, 228; R. Kelly, 222; J. Banks, 215; K. McCalla, 221; M. Poertner, 223.

## Sunday Come-Ons

Standings as of Oct. 3

	W	L
Bowl Dozers	14	0
Team No. 8	12	2
Team No. 2	9	5
Team No. 12	9	5
Jamison's Spoilers	7	7
Gutter Dusters	7	7
Team No. 5	7	7
Gutter Busters	6	8
43-9ers	5	9
Put Togethers	5	9
Independence 76	3	11
DDD	0	14

500 series, men: L. Keezer, 559; K. Norris, 528; L. Tennant, 511.

175 games, men: L. Keezer, 225; L. Tennant, 212; D. England, 210; K. Norris, 200; J. Shadley, 187; L. Castle, 188; S. Gasper, 180; R. Hamel, 182, 178; D. Pelt, 176.

450 series, women: C. Gyde, 504; N. Keezer, 469; T. Sanderdon, 466; M. Morales, 456.

150 games, women: C. Gyde, 183, 168, 153; A. Dowhal, 179; T. Sanderson, 175; R. McGibney, 167; N. Keezer, 162, 158; M. Morales, 157, 157; L. Carter, 157; S. Kruse, 152.

## Chelsea Lanes Mixed

Standings as of Sept. 30

	W	L
Hook, Line & Stinkers	22	6
Mark IV Lounge	21	7
Buckeye Transplants	19	9
Bollinger's Sanitation	19	9
Easy Rollers	19	9
Federal Screw Outlaws	16	12
Bable & Morley	16	12
Torrice & Karnes	14	14
P.S.	13	15
Spare Makers	12	9
Ann Arbor Centerless	11	17
A & K	10	11
Cooks Plumbing	9	12
Dougs Painting	7	12
Floyd's Gang	5	16
Go-Getters	4	24

Men, series 500 and over: J. Torrice, 505; D. Alexander, 512; T. Honaker, 505; L. Keezer, 527; L. Bell, 551.

Women, series 450 and over: L. Alexander, 502; D. Alber, 483; N. Smith, 479; D. Keezer, 475; R. Dils, 540.

Men, high game, 175 and over: J. Torrice, 178; D. Williams, 177; W. Steinaway, 176; L. Keezer, 194; L. Bell, 219.

Women, high game, 150 and over: L. Jarvis, 160; H. Karns, 181; L. Alexander, 190; D. Alber, 182; K. Slet, 153; N. Smith, 178; L. Behnke, 157; J. Norris, 166; C. Steinaway, 163; S. Morley, 160; S. Ellenwood, 156; I. Thibault, 161; D. Keezer, 170; N. Keezer, 180; R. Dils, 202.

## Chelsea Women's Bowling Club

Standings as of Sept. 29

	W	L
Norris Electric	15	1
Titty Mixes	14	2
Mark IV Lounge	12	4
Chelsea Milling	12	4
Parish Cleaners	10	6
Laura's Beauty Salon	10	6
Falmer Ford	8	7
The Print Shop	8	7
Heller Electric	7	9
Lloyd Bridges	7	9
Washtenaw Engineering	6	10
Thompson's Pizza	6	10
Wolverine Bar	6	10
Klink Excavating	6	10
Amway	5	11
Chelsea Grinding	5	11
Chelsea Card & Gift	4	12
Gambles	2	14

500 series and over: J. Fitzsimmons, 531; D. McAllister, 530; D. Flouty, 509; P. Poertner, 504.

450 series and over: R. Hummel, 493; C. Bradbury, 482; A. Boham, 480; P. Elliott, 472; L. Harlow, 468; J. Buku, 468; L. Orlovski, 462; S. Ratzlaff, 461; B. Alber, 460; J. Hafner, 458; B. Fike, 457; J. Rowe, 455; A. Sindlinger, 454; J. Schlee, 453; N. Smith, 451; N. Packard, 450.

150 games and over: J. Fitzsimmons, 202-186; D. McAllister, 177, 161, 192; D. Flouty, 176, 193; P. Poertner, 175, 152, 177; R. Hummel, 212; C. Bradbury, 183; A. Boham, 167, 179; P. Elliott, 170, 154; L. Hafner, 167, 169; J. Buku, 180; L. Orlovski, 172; S. Ratzlaff, 170, 182; D. Alber, 158, 187; J. Hafner, 153, 169; B. Fike, 176; J. Rowe, 168, 166; A. Sindlinger, 155, 169; J. Schlee, 163; P. Rudnicki, 157, 166; J. Alber, 155, 163; S. Klink, 153; B. Mann, 153, 157; J. Mock, 152, 157; A. Fahrner, 154, 151; C. Powell, 172; C. Scherdt, 175; S. Settle, 177; N. Kern, 172; J. Norris, 170; L. Niles, 168; P. Wurster, 166; I. Fouty, 163; D. Fortner, 161; R. Lutovsky, 161; P. Devulder, 160; B. McGuire, 159; B. Bush, 155; M. Thompson, 154; B. Dittenbaugh, 154; S. McCalla, 154; D. Dorow, 154; B. Stahl, 153; B. Bridges, 153; M. Jacobinski, 152; S. Heim, 152; M. McGuire, 151.

## Unknowns League

Standings as of Sept. 29

	W	L
Shady Ladies	25	17
Pin Dusters	25	17
Independents	22	20
Fascinating	18	24
Strikers	15	27

Games of 140 and above: M. Aello, 141; H. Horning, 142; J. Smith, 159; J. Murphy, 179, 145; R. Beeman, 140, 178, 140; Bentley, 156; A. White, 142; K. Greenleaf, 148; S. Schuelke, 141; M. Gipson, 147; J. Mosier, 150, 165.

Series of 425 and over: J. Murphy, 455; R. Beeman, 458; J. Mosier, 451.

## Chelsea Suburban

Standings as of Sept. 29

	W	L
Dairy Queen	24	11
State Farm	22	13
Frisinger Realty	20	15
Chelsea Drug	19	16
Dancer's	19	16
Waterloo Garage	18	17
Chelsea Assoc. Builders	17	18
Dana Dee-Lites	16	19
Mark IV Lounge	15	20
Fletcher Mobil	12	23
Chelsea State Bank	12	23

450 series and over: E. Neibauer, 517; S. Bowen, 504; R. S. Hafner, 478; P. Harrook, 478; N. Collins, 477; V. Stewart, 479; D. Hawley, 476; J. Huston, 468; T. Monroe, 468; D. McAllister, 466; C. Stoffer, 464; J. Schulze, 469; S. Moore, 450.

Games of 165 and over: V. Stewart, 199; D. Hawley, 181; P. Harrook, 181; S. Bowen, 178, 178; C. Stoffer, 187; J. Huston, 173; D. Keezer, 191; M. DeLaTorre, 179; R. McGibney, 174; D. Keezer, 198; T. Monroe, 166, 176; D. McAllister, 172; J. Buku, 180, 170; S. Schulz, 181; E. Neibauer, 184, 175; S. Moore, 167; N. Collins, 165, 168; E. Figg, 167; A. Hocking, 169; S. Hafner, 173, 177.

Stewart, 199; D. Hawley, 181; P. Harrook, 181; S. Bowen, 178, 178; C. Stoffer, 187; J. Huston, 173; D. Keezer, 191; M. DeLaTorre, 179; R. McGibney, 174; D. Keezer, 198; T. Monroe, 166, 176; D. McAllister, 172; J. Buku, 180, 170; S. Schulz, 181; E. Neibauer, 184, 175; S. Moore, 167; N. Collins, 165, 168; E. Figg, 167; A. Hocking, 169; S. Hafner, 173, 177.

## Tri-City Mixed

Standings as of Oct. 1

	W	L
Fitzpatrick Realtor	26	9
Stivers	25	10
Inverness Inn	23	12
Baker & Fletcher	21	14
Triangle Sales	21	14
Chelsea Cleaners	21	14
T-Square Enterprises	20	15
Portage Hardware	19	16
Central Fibre	19	16
Coachmen Four	17	18
Lloyd Bridges Chevrolet	15	20
TNT	14	21
E. P. Smith Pallet Co.	14	21
3-D Sales & Service	13	22
Stapp & Westcott	12	23
Myers & Hoffman	12	23
Mel's Roofing	11	24
The Proud Americans	10	25

500 series, men: K. Barksdale, 523; G. Burnett, 542; F. Cooper, 541; P. Fletcher, 568; A. Hansen, 522; R. Harms, 524; H. Kunzelman, 552; J. Lysteria, 532; D. Scott, 538; M. Smith, 513.

200 games, men: G. Burnett, 223; P. Fletcher, 231; J. Lysteria, 210.

450 series, women: M. Ashmore, 479; V. Bable, 458; G. Detting, 457; K. Fletcher, 487; B. Parish, 487.

150 games, women: M. Ashmore, 189, 167; V. Bable, 158, 154; M. Buku, 151; J. Burnett, 190; G. Detting, 168; K. Fletcher, 152, 160, 175; J. Harms, 163, 172; J. Mock, 172, 152; M. Myers, 152; B. Parish, 199, 153; C. Shadley, 156; P. Sober, 163; M. Westcott, 151.

## Sunday Swingers

Standings as of Oct. 3

	W
Strangers	17
Heavy Rollers	17
Irratics	14
Pinbusters	14
Schulz Gang	14
Big Shots	12
Branham CB Sales	11
2 Plus 2's	11
So What's	10
A & C	9
4 by 4's	9
Beaver Patrol	9
S & W	9
All Season Comfort	7
Gerry Rushing Services	6
Sourkrauts	5
Bottoms Up	4
Lickety Splits	3
Men, over 175: F. Barkley, 191; 182; T. Helmboldt, 181; B. Achtenberg, 181; A. Steingway, 193; L. Degener, 180; M. Zink, 181; W. Schulz, 183; L. Gaken, 182; T. Schneider, 231; M. Neibauer, 181; D. Sober, 211; D. Henry, 207, 191; D. Cumper, 205; E. Vasas, 203, 190.	
Men, over 500: F. Barkley, 530; B. Achtenberg, 506; T. Schneider, 507; D. Henry, 545; D. Cumper, 534; E. Vasas, 537.	
Women, over 150: S. Brown, 155; J. Barkley, 152, 167; T. Hawker, 163; S. Achtenberg, 159; M. Degener, 166; C. Engler, 152; J. Anderson, 167; E. Schulz, 180; S. Bauers, 157; M. Henry, 153; M. Vasas, 150.	
Women, over 450: J. Barkley, 463.	

## Peppermint Patties

Standings as of Oct. 2

	W	L
Team No. 4	4	2
Team No. 1	4	2
Team No. 3	4	2
Team No. 2	0	6

Games 70 and over: C. Hegadorn, 88, 116; T. Harrook, 128, 118; C. Schulze, 95; T. Anderson, 80; S. Poquette, 88, 79; M. Monroe, 86, 81.

Series 100 and over: C. Hegadorn, 204; T. Harrook, 247; L. Kaiser, 110; C. Schulze, 163; R. Johnson, 108; L. Anderson, 124; T. Anderson, 122; S. Poquette, 187; B. Clouse, 105; E. Zink, 128; M. Monroe, 177.

## Junior House League

Standings as of Sept. 29

	W	L
D. D. Deburring	19	2
Mac Tools	24	11
Mark IV Lounge	23	12
3-D Sales & Service	23	12
Team No. 3	22	13
Ann Arbor Kirby	22	13
Washtenaw Engineering	21	14
Slocum Construction	20	15
Village Books	19	16
Boyer Automotive	19	16
Smith's Service	19	16
Ypsi Asphalt	14	21
Michigan Livestock Exch.	14	21
Rockwell International	14	21
Chelsea Lanes	12	23
Nanco Sports	9	26
Team No. 17	4	17
Roberts Paint & Body	6	29

525 and over: T. Schenk, 588; L. McKinnon, 533; T. Stepp, 537; P. Dickinson, 563; G. White, 580; G. Beeman, 583; D. Clark, 559; D. Adams, 528; J. Borders, 578; G. Risher, 528; P. White, 532; G. Northrop, 533; D. Alexander, 532; M. McAllister, 541; K. Norris, 533; D. Cumper, 570; R. Harms, 527; T. Karns, 548; J. Harrook, 546; C. Wilson, 538; P. Weatherwax, 556.

210 and over: R. Schenk, 216, 210; G. White, 225; G. Beeman, 210; D. Clark, 221; J. Borders, 211; D. Alexander, 216; R. Harms, 213.

## Junior Swingers

Standings as of Oct. 2

	W	L
Cool Company	15	5
Boone's Farm Five	15	5
Wileisowumly	14	6
Team No. 6	13	7
S.W.A.T.	12	8
The Wild Bunch	11	9
The Rookies	9	11
The Bowling Wizards	7	13
Unbeatable	7	13
The Striking Five	7	13
Crazy Five	6	14
Team No. 12	4	16

Girls, high games: C. Collins, 196; M. Northrop, 178; C. Fahrner, 131; S. Miller, 128; K. Miliken, 128.

Girls, high series: C. Collins, 450; M. Northrop, 408; C. Fahrner, 370; R. Alexander, 367.

Boys, high games: S. Sannes, 204, 189; M. Schnadt, 183; J. Push, 177; J. Stock, 170; S. Blacklaw, 169.

Boys, high series: C. Sannes, 547; J. Push, 455; D. Thompson, 547.

## DAVIDSON STATION



# OPEN HOUSE

The seed was planted last spring  
and now

## GAR-NETT'S

has blossomed out with a new  
addition, new greenhouse, and  
a new fall look.

### OCT. 8th & 9th

9-5:30

— ★ —

### REFRESHMENTS

and

### DOOR PRIZES



HE VIES FOR PRES IN EMU PLAY: Dale Heydlauff, son of Jerald and Shirley Heydlauff of 11340 Dexter-Chelsea Rd., rehearses a scene from the Eastern Michigan University Players production of "Of Thee I Sing," which opens Oct. 13 in Quirk Auditorium. In the zany spoof on the Washington scene, Dale plays the leading role—that of presidential candidate John P. Wintergreen. Wintergreen runs for the top office using the campaign slogan, "Put Love in the White House." The Gershwin musical, featuring a cast of 52, is the most elaborate production staged at EMU in 20 years. It will be presented Wednesday through Sunday, Oct. 13-17 and Oct. 20-24, at 8 p.m. For further information, call the Quirk Box Office at 487-1221.

## Junior Achievement Program Starting

Brand new businesses will open up in Chelsea beginning Monday, Oct. 11, as the Junior Achievement Program gets underway and high school students start running their own small corporations at the Chelsea JA Center, located at Beach Junior High school.

Organized and operated completely by teen-agers, JA companies are run like miniature corporations. JA members meet one evening a week from 7 to 9 p.m. at the center. They sell stock, elect officers, select, manufacture and market their company's product and learn the principles of salesmanship, leadership and business. And they have a good time.

Each JA company is made up of some 20 high school students and

is sponsored by a major business concern. Under the expert guidance of professionals from business and industry, students get first-hand experience in business. Contests and social events are held throughout the year and local competition can lead to national recognition and scholarships.

Interested high school students are encouraged to visit the first JA meeting on Monday, Oct. 11 to see what's happening.

Please Notify Us  
In Advance of  
Any Change in Address

## FABRIC and NOTION SALE CLOSE-OUT of our Entire Stock

### 3 FOR 2! BARGAINS!

### YARDGOODS SOLD ONLY IN PIECES OF 3 OR MORE YARDS

REG. PRICE PER YARD	3-YARD PRICE
\$ .98	\$1.96
\$1.49	\$2.98
\$1.68	\$3.36
\$1.69	\$3.36
\$1.89	\$3.78
\$1.98	\$3.96
\$2.00	\$4.00
\$2.29	\$4.58
\$2.39	\$4.78
\$2.49	\$4.98
\$2.59	\$5.18
\$2.66	\$5.38
\$2.69	\$5.38
\$2.79	\$5.58
\$2.88	\$5.78
\$2.89	\$5.78
\$2.98	\$5.96
\$3.00	\$6.00
\$3.29	\$6.58
\$3.98	\$7.96
\$4.98	\$9.96

WANT MORE THAN 3 YDS.?  
1/2 OFF EACH ADDITIONAL  
YARD

AMERICAN EXPRESS  
BANKAMERICARD  
MASTER CHARGE  
CARDS WELCOME

### TAPES

Packages of ten assorted sizes and colors

.39 TAPES	\$2.30
.42 TAPES	\$2.80
.49 TAPES	\$3.27
.55 TAPES	\$3.65
.98 TAPES	\$6.50

### ZIPPERS

Packages of ten assorted colors

### 1/3 OFF

### NOTIONS

PACKAGED ASSORTMENTS

### 1/3 OFF

ALL SALES FINAL  
SORRY — NO LAYAWAYS

THIS COUPON WORTH  
AN ADDITIONAL 50c OFF  
YOUR FABRIC-NOTION PURCHASE.  
LIMIT: ONE PER CUSTOMER

SALE ENDS SATURDAY, OCTOBER 30  
AFTER WHICH THIS MERCHANDISE WILL NO LONGER  
BE AVAILABLE AT VOGEL'S STORE

# VOGEL'S

109 S. MAIN, CHELSEA

## ★ District Court Proceedings ★

Week of Sept. 28-Oct. 4

Douglas S. Moore was sentenced to pay fines and costs of \$300, and to one year probation on charges of driving under the influence of liquor.

Pamela Dechert pled guilty to charges of no operator's license on her person. Fines and costs, \$22.

Donald Cain pled guilty to charges of driving with a loud exhaust. Fines and costs, \$12.

Brett Fischbach pled guilty to charges of driving under the influence of liquor. He will be sentenced Nov. 23.

Clarence Romans pled guilty to charges of drunk and disorderly. Fines and costs, \$50.

Debra M. Fischhaber pled guilty to reduced charges of impaired driving. She will be sentenced Nov. 23.

John D. Burkhardt was found guilty on charges of driving with license suspended. He was sentenced to pay fines and costs of \$50, and to three days on the Saline Police Department work program.

Charles R. Cooper pled guilty to charges of driving with license suspended. He was sentenced to pay fines and costs of \$75, and to three days in jail suspended.

Rebecca VanSickle was found guilty on charges of disorderly person. She was sentenced to 16 days in jail.

Melvin Humphrey pled guilty to charges of driving with license suspended. He was sentenced to pay fines and costs of \$50, and to five days on the police department work program.

Jean Draper pled guilty to charges of disobeying a red signal. Fines and costs, \$22.

Truman Butler pled guilty to driving on a restricted license. Fines and costs, \$35.

Robert D. Roles was found guilty on reduced charges of impaired driving. He will be sentenced Nov. 23.

William Elliott was sentenced to pay fines and costs of \$35 on charges of allowing his biting dog to run at large.

David Hyatt pled guilty to charges of aggravated assault and battery. He will be sentenced Dec. 2.

Scott Welhoff pled guilty to charges of aggravated assault and battery. He will be sentenced Dec. 2.

Michael Kirk pled guilty to charges of aggravated assault and battery. He will be sentenced Dec. 2.

Dennis Dinco pled guilty to charges of possession of alcohol in a restricted area. Fines and costs, \$35.

Jeffrey Asmusser was found guilty on charges of driving without due care and caution. Fines and costs, \$30.

Gary Nakbala pled guilty to charges of driving his motorcycle without an operator's license. Fines and costs, \$17.

Kevin Lauterwasser pled guilty to charges of speeding. Fines and costs, \$31.

Judith Green pled guilty to charges of speeding. Fines and costs, \$44.

William Burgett was found guilty on charges of careless driving. Fines and costs, \$75.

Lawrence Cote pled guilty to charges of no registration on his person. Fines and costs, \$19.

Craig Rigan failed to appear in court on charges of fleeing a police officer, driving with license revoked, no registration, and no insurance. A bench warrant was issued for his arrest.

Jerry Spiess pled guilty to charges of careless driving. Fines and costs, \$30.

James Hagerman pled guilty to charges of speeding. Fines and costs, \$47.

Mark Eversole pled guilty to charges of improper registration plates. Fines and costs, \$30.

Raymond C. Tell pled guilty to charges of driving under the influence of liquor. He was referred to probation, to the Alcohol Safety Action Program, and will be sentenced Nov. 28.

Richard William Wilson pled guilty to charges of failing to maintain his vehicle. Fines and costs, \$10.

Richard William Wilson pled guilty to charges of no insurance. Fines and costs, \$17.

Richard William Wilson pled guilty to charges of improper registration plates. Fines and costs, \$17.

Stanley Chapman was sentenced to pay fines and costs of \$100, and to three days in jail suspended, on charges of driving with license suspended.

Robert E. Clay was found guilty on charges of driving under the influence of liquor. He will be sentenced Nov. 26.

Elzear Savoie was found guilty on charges of impaired driving. He will be sentenced Nov. 26.

Gretchen Lempio was found guilty on charges of speeding. Fines and costs, \$35.

Donnie Stanley pled nolo contendere to charges of assault and battery. He was sentenced to thirty days in the county jail.

Harold Brandon pled guilty to charges of speeding. Fines and costs, \$50.

Harold Brandon pled guilty to charges of driving with an expired license. Fines and costs, \$22.

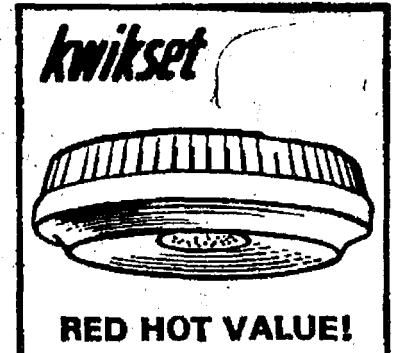
James Collinsworth pled guilty to charges of disorderly person. He will be sentenced Nov. 23.

James Collinsworth pled no contest to charges of malicious destruction of property valued under \$100. He will be sentenced Nov. 23.

Ronald Pustay failed to appear in court on charges of violating a zoning ordinance. A bench warrant was issued for his arrest.

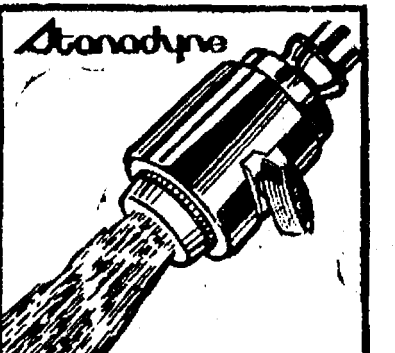
Allan E. Carr was found guilty on reduced charges of impaired driving. He will be sentenced Nov. 26.

Harry Malaniak was found guilty on charges of impaired driving. He was referred to the Alcohol Safety Action Program and will be sentenced Nov. 23.



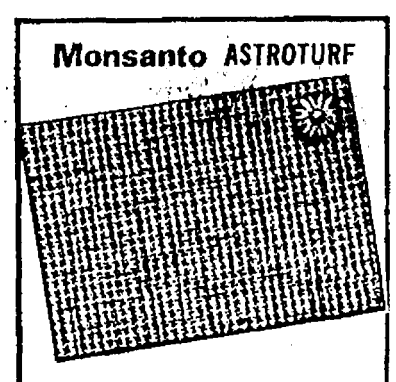
SMOKE and FIRE  
DETECTOR ALARM  
\$32.88  
REG. \$27.95  
SAVE \$8.07

Installs on ceiling in a few minutes.  
Long-life battery powers the alarm  
...eliminates wiring. (2)



TOUCH CONTROL  
Pulsating SHOWER  
\$19.88  
REG. \$27.95  
SAVE \$8.07

New showerhead delivers pulsating  
bursts of water that stimulate,  
soothe and massage. (123)



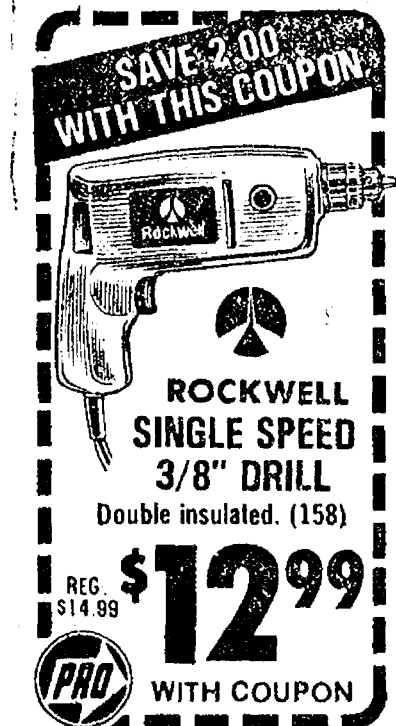
17-1/2 in. x 23-1/2 in.  
DOOR MAT  
\$2.99  
REG. \$5.95  
SAVE \$2.96

A bright, perky daisy adds just  
the right touch of fashion to this  
durable product. (86)



SPRING STEEL  
LEAF RAKE  
\$1.77  
REG. \$2.40  
SAVE 63¢

Durable, flexible tines will not  
harm turf. Lightweight, easy to  
handle. (5)



SAVE 2.00  
WITH THIS COUPON  
\$12.99  
REG. \$14.99  
WITH COUPON

Double insulated. (158)



SAVE 1.03  
WITH THIS COUPON  
\$1.47  
REG. \$2.50  
WITH COUPON

With ties. (152)

### Century self-contained water softener

compact  
convenience  
gets rid of  
washday blues

Gone are dull, drabby  
colors... stiff,  
starchy laundry... gray  
shirts that should be  
white. With a Century  
water softener, wash  
days become brighter.  
And this beautiful compact  
unit frees-up floor space,  
makes your laundry area larger.  
Phone for details.



Master Charge and BankAmericard Welcome

## CRYSTAL CLEAR CO.

4757 Dexter-Pinckney Rd.  
Dexter, Mich. - 426-4220

STORE HOURS: Mon.-Fri. 9-5:30  
Sat. 9-4. Closed Sundays

SERVICE  
ADVICE  
VALUE  
QUALITY



### FALL BULBS

Tulips - Daffodils  
Crocus - Hyacinths

## ARIENS POWER SNOW BLOWERS

2-STAGE  
4, 6, 7 HORSEPOWER

### From \$429<sup>95</sup>

Includes FREE ELECTRIC STARTER

## CHELSEA HARDWARE

110 S. Main St.

Phone 475-1121





**Polly's** MASTER  
MARKETS

1101 M-52

**CHELSEA, MICH.**

(Corner M-52 and Old U.S. 12)

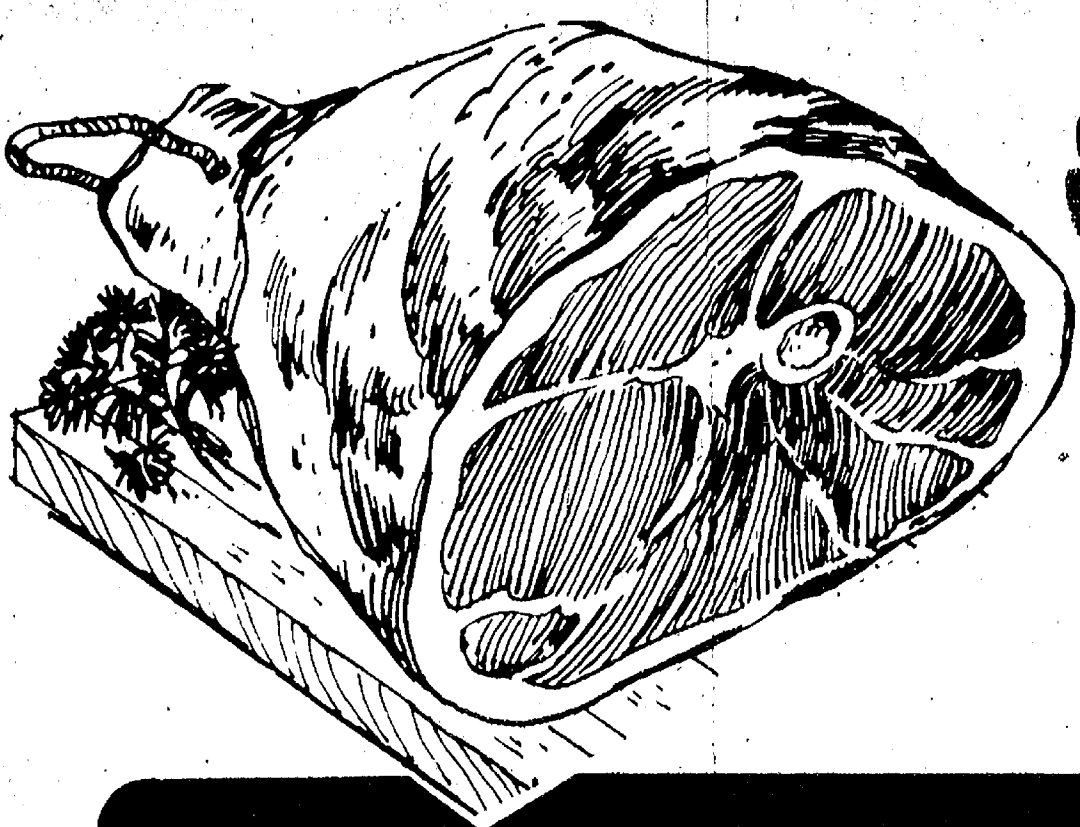
Supplement to Ann Arbor News, Chelsea Standard

**get to know us...**

**WE CAN HELP YOU SAVE ON YOUR FOOD BILL!**

- ★ **QUALITY PRODUCE**
- ★ **QUALITY MEAT**
- ★ **COLD BEER & WINE**
- ★ **LOTTERY TICKETS**
- ★ **SIDES OF BEEF**
- ★ **FRUIT BASKETS**
- ★ **DRY CLEANING**
- ★ **PHOTO PROCESSING**
- ★ **VARIETY AT LOW PRICES**





SWIFT PREMIUM  
**CAN HAM** 5-LB. **\$8.49**

POLLY PRIDE QUALITY  
**HAMBURG**

5-LBS. or more LB. **58¢**



**Polly's** MASTER MARKETS  
1101 M-52  
**CHELSEA, MICH.**  
(Corner M-52 and Old U.S. 12)

Bob Evans Pork  
**ROLL SAUSAGE** 1-LB. **\$1.29**  
Hormel  
**SMOKY LINKS** 10-OZ. **99¢**  
Hormel Sliced  
**LUNCH MEATS** 12-OZ. **89¢**  
Eckrich  
**SMOKED PAC** 1-LB. **\$1.49**  
Oscar Mayer  
**FRANKS** 1-LB. **\$1.09**

Oscar Mayer Sliced  
**BEEF BOLOGNA** 1-LB. **\$1.29**  
Oscar Mayer  
**LINK SAUSAGE** 1-LB. **\$1.49**  
Oscar Mayer  
**SANDWICH SPREAD** 8-OZ. **59¢**  
Hygrade Regular or  
**BEEF FRANKS** 1-LB. **79¢**  
Hygrade Sliced  
**COOKED SALAMI** 1-LB. **99¢**

Hygrade Sliced  
**BOLOGNA** 1-LB. **89¢**  
Fresh Frozen  
**TURBOT FILLETS** 1-LB. **99¢**  
Fresh Frozen  
**SOLE FILLETS** 1-LB. **89¢**  
Fresh Frozen  
**MONK FISH** 1-LB. **\$1.99**  
Oscar Mayer Chub  
**BRAUNSWEIGER** 8-oz. **59¢**

POLLY PRIDE QUALITY  
**BEEF**

Polly Pride Boneless  
**CHUCK ROAST** 1-LB. **99¢**  
Polly Pride Boneless  
**CHUCK STEAK** 1-LB. **99¢**  
Polly Pride Boneless  
**ENGLISH ROAST** 1-LB. **\$1.19**  
Polly Pride Boneless  
**STEW BEEF** 1-LB. **\$1.29**  
Polly Pride Quality  
**CUBE STEAK** 1-LB. **\$1.59**  
Polly Pride Beef  
**SHORT RIBS** 1-LB. **69¢**  
Swift Premium Sliced  
**BEEF LIVER** 1-LB. **69¢**

SCOT PRIDE  
SLICED  
**BACON**  
**99¢**  
LB. WITH COUPON

Government Inspected  
**MIXED FRYER PARTS** LB. **49¢**

Government Inspected Whole  
**CHICKEN LEGS** LB. **69¢**  
Government Inspected  
**CHICKEN THIGNS** LB. **69¢**  
Government Inspected  
**DRUMSTICKS** LB. **79¢**

**Freezer Beef**

Whole  
**BEEF LOIN** After Cutting \$1.99 LB. **\$1.59**  
Whole  
**BEEF RIB** After Cutting \$1.39 LB. **\$1.29**  
Polly Pride  
**STRIP STEAKS** 5-LBS. more LB. **\$2.89**  
Polly Pride  
**GROUND CHUCK** 10-LB. BAG **\$8.90**  
Polly Pride Whole  
**PORK LOIN** LB. **\$1.09**

BUDDIG SMOKED  
Thin Sliced  
**MEATS**  
**3** 3-OZ. PKGS. **\$1**  
WITH IN-STORE COUPON

GOLDEN RIPE  
**BANANAS** LB. **19¢**

SCOTLAD  
**ORANGE JUICE** 16-oz. **49¢**  
SCOT LAD FROZEN  
**K.K. POTATOES** 2-LB. **49¢**  
RIO ROUND  
**BREADED SHRIMP** 2-LB. **\$3.39**  
WITH BONUS COUPON  
LADY BORDEN  
**ICE CREAM** QT. **89¢**

CRISPY  
**PASCAL CELERY** 3 for **\$1**  
FRESH  
**GREEN CABBAGE** LB. **12¢**  
FRESH  
**PARSNIPS or TURNIPS** LB. **29¢**  
U.S. NO. 1  
**CHERRY TOMATOES** PINT **49¢**  
FRESH  
**FLORIDA AVACADOES** EA. **39¢**  
SNO-WHITE  
**MUSHROOMS** LB. **99¢**



BORDEN  
**ICE CREAM BAR STIX**  
**49¢**  
6-PAK WITH IN-STORE COUPON

U.S. NO. 1  
**BOILING ONIONS**  
**79¢**  
10-LB. WITH IN-STORE COUPON

AUSTRIA-EMAIL COOKWARE  
**SAVE \$2.00**  
the price of Austria email  
**5 QT. COV. DEEP STEW POT**  
Reg. Price **\$11.99**  
**SALE PRICE \$9.99**

AUSTRIA-EMAIL COOKWARE  
**SAVE \$2.00**  
the price of Austria email  
**2 QT. COVERED SAUCEPAN**  
Reg. Price **\$9.99**  
**SALE PRICE \$7.99**



# OKTOBERFEST

SAVE 28¢  
WITH  
IN-STORE  
COUPON

REGULAR or DIET  
**FAYGO POP** . . . . .

6 16-OZ. BOTTLES \$1

SAVE 10¢  
WITH  
IN-STORE  
COUPON

BREAST O' CHICKEN  
**TUNA FISH** . . . . .

2 6.5-OZ. CANS \$1

SAVE 40¢  
WITH  
IN-STORE  
COUPON

RIVAL  
**DOG FOOD** . . . . .

5 15-OZ. CANS \$1

Save  
UP TO  
**\$9.22**

WITH ALL POLLY'S  
BONUS & IN-STORE  
COUPONS

**VALUABLE COUPON**  
Save UP TO 60¢  
Sealtest 1/2% LO-FAT MILK  
Gallon 99¢  
LIMIT 2 PER COUPON PER FAMILY  
GOOD THRU 10/9/76  
7

**VALUABLE COUPON**  
Save UP TO 80¢  
Maxwell House COFFEE  
3-LB. \$4.99  
with \$5.00 purchase  
LIMIT 1 PER COUPON PER FAMILY  
GOOD THRU 10/9/76  
8

**VALUABLE COUPON**  
Save UP TO 39¢  
Polly's Quality White BREAD  
24-OZ. LOAVES \$1  
LIMIT 3 PER COUPON PER FAMILY  
GOOD THRU 10/9/76  
9

**VALUABLE COUPON**  
Save UP TO \$1.40  
Scot Pride BACON  
1-LB. PKG. 99¢  
LIMIT 2 PER COUPON PER FAMILY  
GOOD THRU 10/9/76  
10

**VALUABLE COUPON**  
Save UP TO 66¢  
SINAREST  
20-CT. 88¢  
LIMIT 2 PER COUPON PER FAMILY  
GOOD THRU 10/9/76  
11

**VALUABLE COUPON**  
Save UP TO 80¢  
Rio Round BREADED SHRIMP  
2-LB. \$3.39  
LIMIT 1 PER COUPON PER FAMILY  
GOOD THRU 10/9/76  
12

Save Up To 60¢  
With Bonus Coupon

SEALTEST 1/2%  
LO-FAT  
MILK

GALLON **99¢**

Save 39¢ With Coupon  
POLLY'S QUALITY WHITE

**BREAD**

3 24-OZ. LOAVES **\$1**

MAXWELL HOUSE

**COFFEE**

3-LB. CAN **\$4.99**

WITH COUPON  
AND \$5.00 PURCHASE

DUNCAN HINES  
BROWNIE  
MIX

23-OZ. **79¢**  
WITH IN-STORE COUPON

**HEALTH  
AND  
BEAUTY  
AIDS**



SAVE 32¢  
WITH  
IN-STORE  
COUPON

BAMA  
**GRAPE JELLY** . . . . .

18-oz. **59¢**

SAVE 20¢  
WITH  
IN-STORE  
COUPON

JIF  
**PEANUT BUTTER** . . . . .

40-oz. **\$1.79**

SAVE 70¢  
WITH  
IN-STORE  
COUPON

INSTANT  
**SANALAC MILK** . . . . .

10-qt. **\$1.99**

BAKERS  
CHOCOLATE  
CHIPS

12-OZ. **59¢**

EVAPORATED  
PET  
MILK

3 13-OZ. CANS **\$1**

**sinarest**

For Effective Relief of Sinus  
Headache and Congestion



**MIX or MATCH!!**

17-oz. Joan of Arc  
W.K. CORN  
17-oz. Joan of Arc  
EARLY PEAS  
17-oz. Joan of Arc  
CREAM CORN  
15-oz. Stokely Cut  
GREEN BEANS

15-oz. Stokely  
FRENCH BEANS  
15-oz. Stokely  
SHELLIE BEANS  
15-oz. Stokely Dark Red  
KIDNEY BEANS  
15-oz. Stokely  
BAVARIAN KRAUT

20-CT.  
TABLET

**88¢**

WITH BONUS COUPON

LIBBY'S  
TOMATO  
JUICE

2 46-OZ. CANS **\$1**

4 CANS FOR **\$1**



SO  
**LAUNDRY DETERGENT** 49-oz. **99¢**  
EAMETTE  
**MACARONI & CHEESE** 5 7-oz. **\$1**  
RESIDE  
**COOKIES** 3 8-oz. **\$1**  
Miss Miss  
**HOT COCOA MIX** 12-CT/12-OZ. **99¢**  
PER MOTTS  
**PRUNE JUICE** 40-OZ. **69¢**  
SORTED  
**MRS. GRASS SOUP** 2 for **29¢**  
ETER GREEN  
**KITTY LITTER** 4-LB. **89¢**  
HUMMY  
**DOG FOOD** 25-LB. **\$3.59**  
ENZ  
**CATSUP** 32-OZ. **89¢**

GLAD  
**TRASH BAGS** 8-CT. **99¢**  
PURE VEGETABLE  
**CRISCO OIL** 24-OZ. **89¢**  
DUNCAN HINES  
**CAKE MIX** 19-OZ. **59¢**  
LIPTON  
**ONION SOUP** 53¢  
FIRESIDE  
**FIG BARS** 2-LB. **99¢**  
20¢ OFF  
**CHEER DETERGENT** 84-OZ. **\$2.23**  
NEW!! KELOGGS  
**FROSTED RICE** 16-OZ. **97¢**  
FOULDS  
**ELBO MACARONI** 2 7-OZ. **39¢**  
FOULDS THIN  
**SPAGHETTI** 2 7-OZ. **39¢**

**CLEARASIL CLEANSER**  
4 oz. **\$1.43** \$1.79 Value

**DESITIN BABY FRESH LOTION**  
10 ounce **\$1.29** \$1.59 Value

**Q-TIPS COTTON SWABS**  
Pack of 400 **\$1.29** \$1.99 Value

**Aim**  
12c Off 4.6 oz. **77¢** \$1.08 Value

**LAVORIS**  
12 ounce **88¢** \$1.39 Value

<b>COLGATE DENTAL CREAM</b> 9 oz. Tube <b>\$1.09</b> \$1.72 Value	<b>KOTEX TAMPONS</b> Regular & Super Pack of 40 <b>\$1.89</b> \$2.36 Value
<b>Clairel HERBAL ESSENCE SHAMPOO</b> 20c Off Label 8 oz. <b>99¢</b> \$1.85 Value	<b>CHLORASEPTIC</b> Regular or Cherry 6 oz. Spray <b>\$1.19</b> \$1.80 Value
<b>PERSONNA DOUBLE II</b> 5 Cartridges <b>\$1.26</b> \$1.49 Value	<b>LOZENGES</b> Reg. or Cherry 18's <b>77¢</b>
<b>PEPTO-BISMOL LIQUID</b> 8 oz. \$1.59 Value <b>\$1.19</b>	
<b>RIGHT GUARD ANTI-PERSPIRANT</b> Silver Powder Double Protection 20c off label 5 ounce <b>79¢</b> \$1.40 Value	<b>SINEX LONG-ACTING</b> Decongestant Nasal Spray 15 cc Spray <b>\$1.59</b> \$1.99 Value
<b>BRECK SHAMPOO</b> 7 oz. - \$1.65 Value <b>\$1.28</b> <b>CREAM RINSE</b> 7 oz. <b>\$1.17</b> \$1.42 Value	<b>TRAC II Shave Cream</b> W/FREE RAZOR 11 oz. - \$1.69 Value <b>\$1.19</b>



PRICES ARE FALLING. GATHER  
UP THE SAVINGS AT POLLY'S...

# OKTOBERfest

